



PIR version shown

## Vertigo® Duet Linear

**LED**
  
 136W LED  1623  LED  136  + 463

**LED & PIR**
  
 136W LED  1626  LED  136  + 463

PIR versions not suitable for use with Gear Types J, K, L and M

**Control Devices**
  
 Microwave/PIR Controller   CD1602  X  PIR000

PN Pendant  GR Gripple  SM Surface  TM Trunking

NB: Gripple and Trunking versions not supplied with fixings, Gripple versions can be used for chain mounting.

**A** Integral Driver/Remote  
**E** Emergency  
**J** Switch Dim  
**K** Switch Dim + Emergency  
**S** DALI Dim  
**T** DALI Dim + Emergency  
**C** DALI Dim + DALI Emergency  
**L** DALI Bluetooth  
**M** DALI Bluetooth + Emergency

3 Warm (3000K)  4 Neutral (4000K)

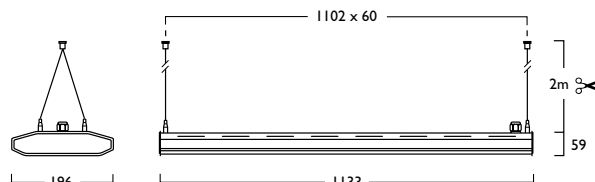
1 White (RAL 9010)  2 Urban Graphite (RAL 7046)  3 Black (RAL 9005)

Reflector Option

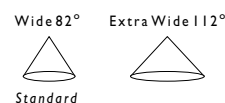
546 2x Extra Wide Beam  466

144 2x 5m Twin Suspensions (Wires only)

- Available in a choice of lumen outputs delivering upto 23,894 lumens
- Efficacies up to 126 lm/W
- Wide beam refractor (82°) as standard, ideally suited to Warehouse and Superstore applications
- Optional extra wide beam refractor (112°) for general illumination
- Suitable for ambient temperatures up to 40°C
- Life expectancy in excess of 72,000 hours (L80 B10) at 25°C ambient and 70,000 hours (L80 B10) at 40°C ambient
- Colour stability within 3 MacAdams
- The PIR Detector defaults can be modified with the use of the Hand Held Controller (contact Technical for advice)
- Versatile installation solutions include Suspended, Surface, Trunking and Gripple. (Gripple and Trunking not supplied with fixings)
- Suspension versions supplied with 2 x 2m Suspensions and chrome clutches as standard
- IK08 Compliant
- Wireless Lighting Control available
- Digital Dim and Digital Dim + Emergency options available



230V  IP  20  1102 x 60mm  4.7 kg  Ta  40°C



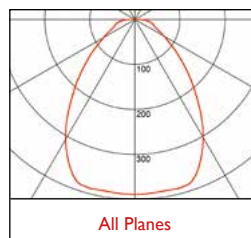


**Duet Linear** | 133 x 196 x 59mm

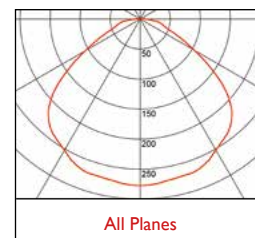
## Vertigo® Duet Linear

<b>3</b>	<b>Warm White LED (3000K)</b>	<b>CRI 80</b>	<b>136W</b>
		Lumen Output	22723 lm
		LOR	0.80
		CRI	80
		Total Power	151W
		Power Factor	0.95
		Running Current	0.62A
		Inrush Current (Std)	50.5A (176us)
		Inrush Current (Dim)	17.7A (162us)
		Efficacy	120 lm/W
Emergency Output (BLF)	380 lm (2%)		
<b>4</b>	<b>Neutral White LED (4000K)</b>	<b>CRI 80</b>	<b>136W</b>
		Lumen Output	23894 lm
		LOR	0.80
		CRI	80
		Total Power	151W
		Power Factor	0.95
		Running Current	0.62A
		Inrush Current (Std)	50.5A (176us)
		Inrush Current (Dim)	17.7A (162us)
		Efficacy	126 lm/W
Emergency Output (BLF)	400 lm (2%)		

### Photometrics



**463 DLOR: 0.80**



**466 DLOR: 0.80**

*Suspensions and Mounting details shown over*

# Vertigo® Duet Linear Suspensions & Mounting

## Fixing Types

**PN** Pendant

**GR** Gripple

**SM** Surface

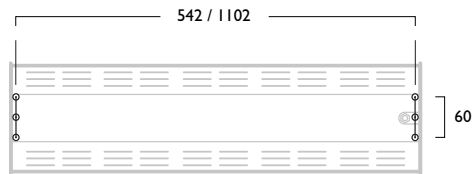
**TM** Trunking



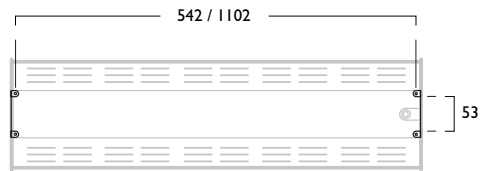
## Fixing Centres

### Duet / Duet Linear

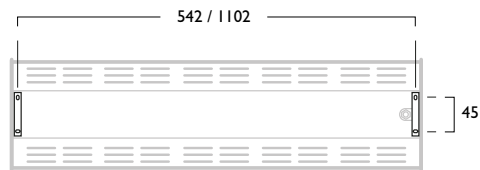
**PN** Suspended



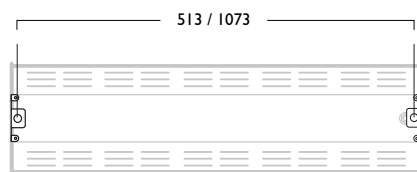
**GR** Gripple



**SM** Surface



**TM** Trunking



Tel: (0191) 280 9911 Email: [technical@hacel.co.uk](mailto:technical@hacel.co.uk) Web: [www.hacel.co.uk](http://www.hacel.co.uk)

\* All values provided in this document are subject to International standards and electronic components from leading suppliers which are subject to +/- 10% tolerance and apply at an ambient temperature of 25°C. Hacer Lighting look to constantly improve it's product and reserve the right to change specifications without prior notification.