

IMPORTANT INFORMATION

DO NOT REMOVE BRACE UNTIL INSTALLATION IS COMPLETE

Explora® Halo Direct Indirect Pendant – PN1705/PN1706/PN1707/PN1708/PN1709/PN1710/PN1711

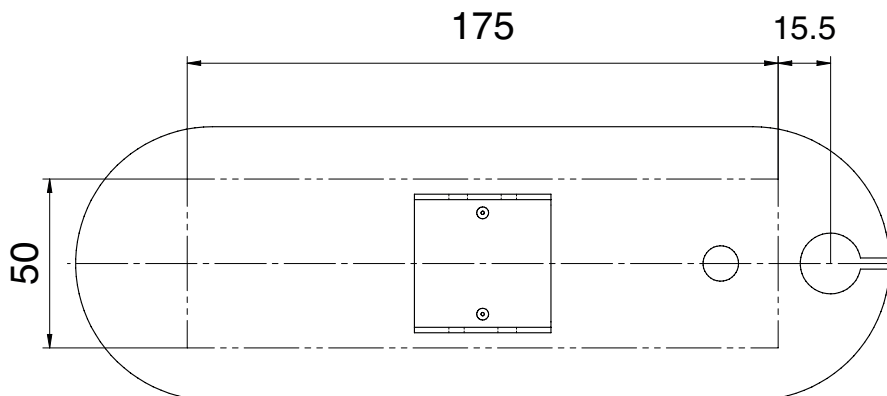
Explora® Halo Direct Pendant – PN1715/PN1716/PN1717/PN1718/PN1719/PN1720/PN1721

INSTALLATION INFORMATION



1. **Ensure electrical supply is isolated before fitting and/or making any electrical connections.**
Luminaires should be disconnected from the mains supply before any High Voltage Insulation tests are carried out. The total length of cabling between all DALI Drivers and all Push to Make Switches must not exceed 25m. For greater cable lengths a DALI Repeater must be used (contact Technical for advice).
2. **The Marking Templates supplied are for fixing luminaires to horizontal surfaces, they are not suitable for fixing luminaires to pitched surfaces.**
3. The Explora Halo Pendant is dispatched with a Wooden Support Brace, leave the Brace in place until installation is complete.
4. Mark the centre position of the luminaire on the mounting surface.
5. Temporarily fix the Marking Template to the mounting surface at the centre position, as shown in Illustration 1.
6. Make a pencil mark on the mounting surface through Hole A.
7. Use the template to identify the size of Halo you have and mark the corresponding hole for the first wire suspension position. See label info on template for sizes
8. From this hole position, mark ceiling cut out for driver as per image shown below:

Cut out is 175mm x 50mm

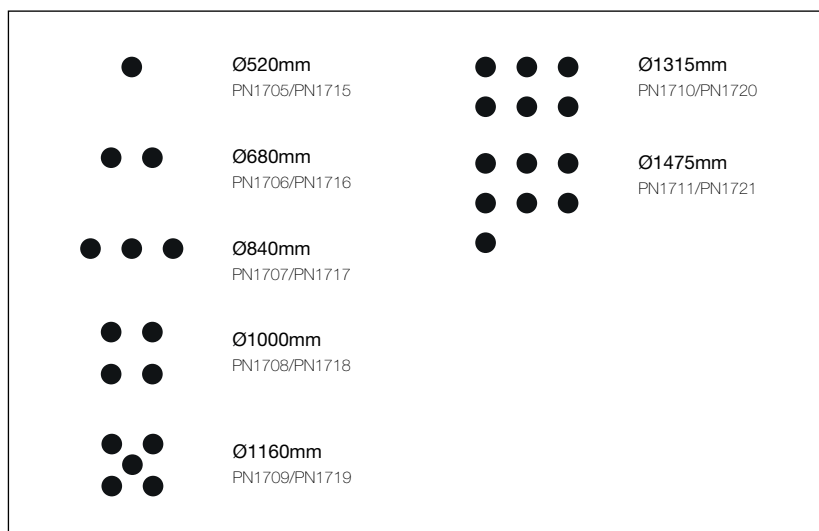


IMPORTANT INFORMATION

9. Rotate the Template 120° until Hole C is over the pencil mark made earlier and mark the second Wire Suspension position.
10. Rotate the Template a further 120° until Hole B is over the pencil mark and mark the third Wire Suspension position.
11. Bring the mains/dimming cabling (from the void) through the access hole.
12. Make provision for fixing the luminaire to the mounting surface.
Due to the weight of these luminaires, ensure suitable fixings are used when installing!
13. Separate the two parts of the Ceiling Bosses.
14. Fix the upper part of the Ceiling Boss into the mounting surface.
15. Fit the other two upper parts of the Ceiling Bosses to their respective fixing positions.
16. With assistance if necessary, offer the luminaire up to the Suspension Wires.
17. Push down on the necks of the Suspension Clutches and feed the Suspension Wires in, the Clutches will re-engage when the neck is released which will support the luminaire temporarily.
18. Set the luminaire to the required height and check using a spirit level between adjacent Suspension Clutches.
19. Measure and cut the Secondary Cable from the luminaire, ensuring that there is sufficient excess to allow the cable to be cable tied to the Suspension Wire (if desired) and to reach the driver.
20. Make the mains/dimming connections to the driver according to the information on the driver.
Ensure Strain Relief cover is refitted to the driver.
21. Re-check that the luminaire is level and cut away any excess Suspension Wire. The Wooden Support Brace can now be removed by carefully cutting the cable ties.
22. If necessary, fill the hole where the template was temporarily fixed.
23. Reconnect the electrical supply and test the installation.

Ceiling Plate Installation (Gear Housing in ceiling void)

1. Feed secondary cable through 10.5mm hole in ceiling plate.
2. Connect secondary cable to driver and feed driver through ceiling cut out.
3. To fit ceiling plate, slide suspension wire through slot in plate and lift the springs to locate through cut out in the ceiling.
4. Ensure ceiling boss is located in hole in ceiling plate.



Ceiling Template Label

IMPORTANT INFORMATION

DO NOT REMOVE BRACE UNTIL INSTALLATION IS COMPLETE

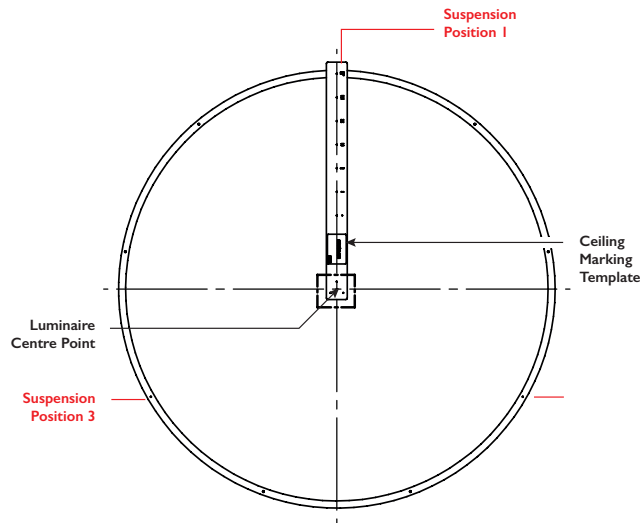


Illustration 1

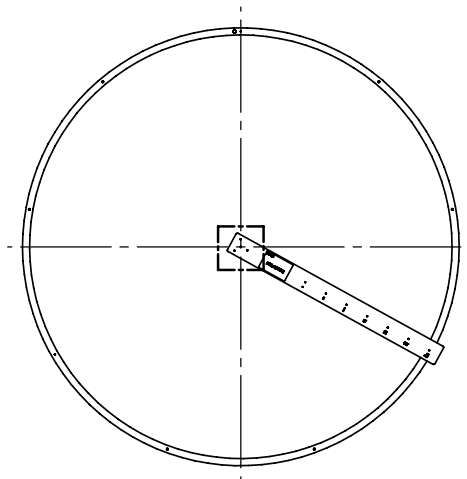
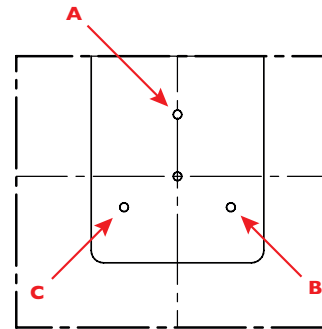


Illustration 2

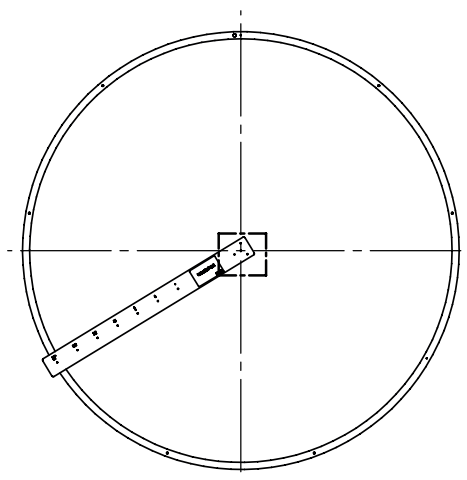
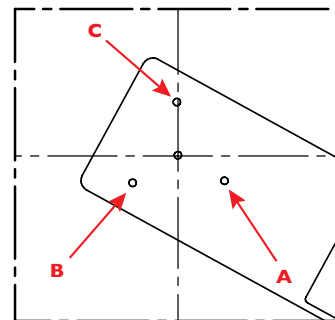


Illustration 3

