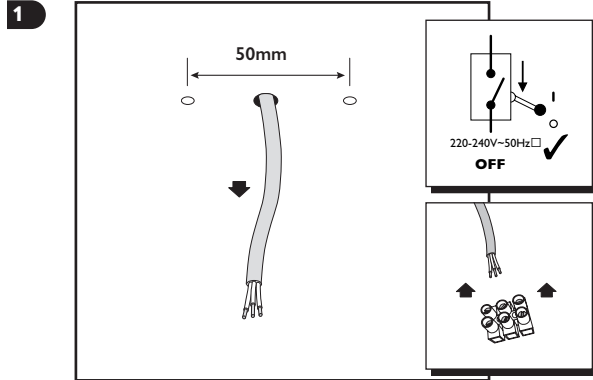
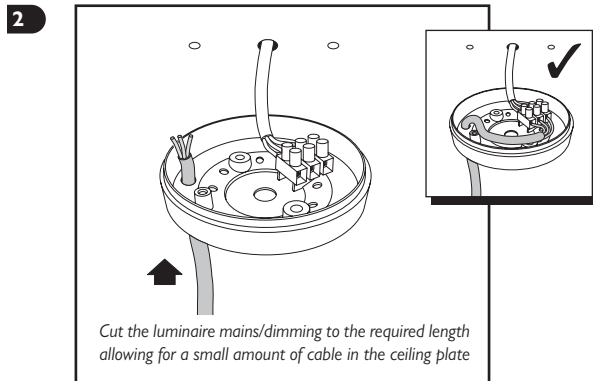
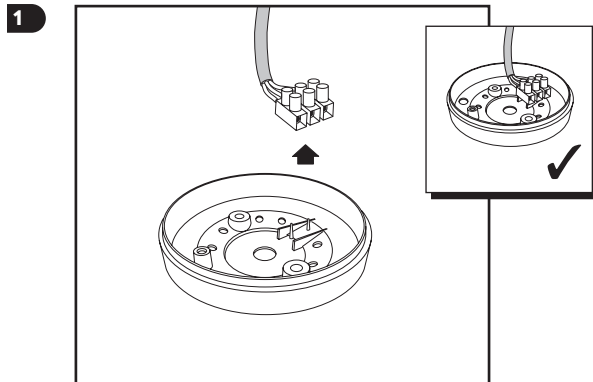


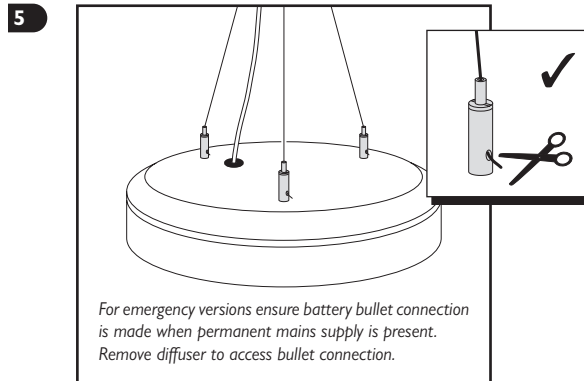
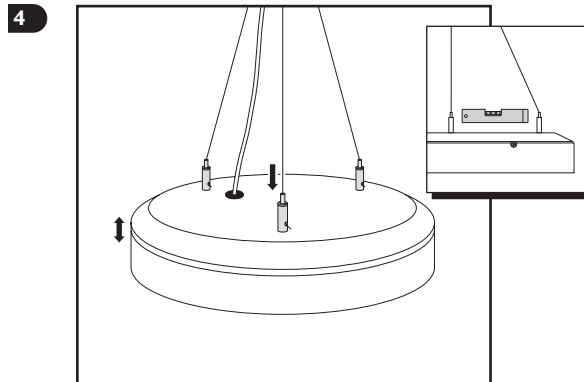
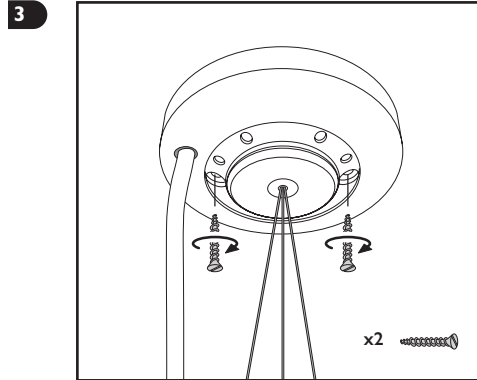
Preparation



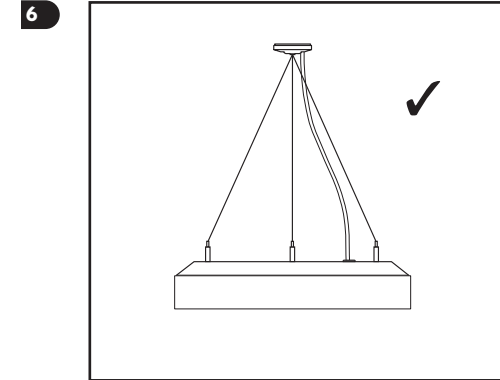
Installation



Installation Cont.



Installation Cont.



Installation information for Remote Emergency Packs

	WHITE	- Used for dimming systems, see notes below
	RED	- Used for dimming systems, see notes below
N	BLUE	- Neutral
E	GREEN/YELLOW	- Earth
L1	BROWN	- Live
L2	BLACK	- Live (Emergency Unswitched)

1. Remove lid of Remote Emergency Pack.
2. Connect lamp cable to corresponding colours marked on connector blocks (if not already connected).
3. Fit cable glands (not supplied) for mains/dimming cables.
4. Connect mains/dimming cables according to information below.
5. Make battery/inverter connection before replacing lid.
6. Replace lid.

The **White** and **RED** terminals should be used as follows:

Digital Dimming (Gear types; F and G)

WHITE - DSI Signal **RED** - DSI Signal

DALI Dimming (Gear types; C, S and T)

WHITE - DALI Signal **RED** - DALI Signal

Switch Dimming (Gear types; J and K)

WHITE - Not used **RED** - Live (Dimming Switched)
BROWN - Live (Unswitched)

IMPORTANT INFORMATION

Solos® Pendant



Disconnect electricity supply before installation.

To be installed by qualified personnel only.

When installing, Hacel recommends wearing disposable gloves to avoid fingerprinting to the paint work of the luminaire.

Read leaflet fully before installation.

Hacel[®]
Fluent in Lighting

THE SILVERLINK, WALLSEND, NEWCASTLE UPON TYNE,
TYNE & WEAR, NE28 9ND

Technical: (0191) 280 9914
Email: technical@hacel.co.uk
Web: www.hacel.co.uk