

## Infinitas® Nano Xcel Corner 90° Direct Indirect

Infinitas® Nano Xcel by Hacer is a refined LED system. Designed and manufactured in the UK, Infinitas® Nano Xcel is sophisticated and minimal in its design. Precision extruded luminaires are available in Surface, Suspended or Recessed Bezel formats.

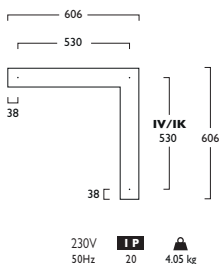
As part of the Infinitas® range, creating continuous lines of uninterrupted uniform lighting, the flexibility of Infinitas® Nano Xcel is further enhanced by Direct and Indirect lighting variations and complete illuminated 90° corners are available, offering diversity in architectural lighting design.

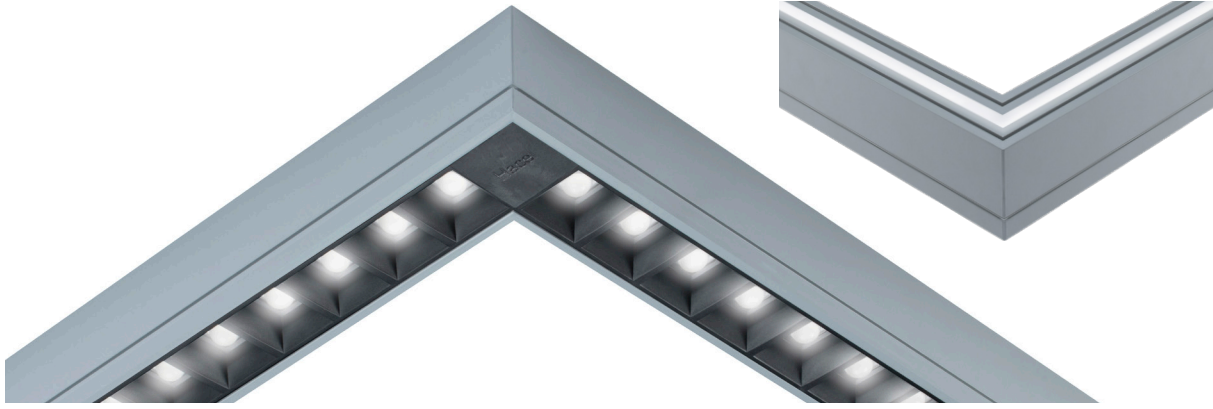
Stylish Solo Modules are also available to compliment the continuous system. Solo Modules are supplied complete with End Caps.

- Available in High, Medium or Low Output Modules
- Clip in gear trays for ease of installation - 70% quicker than screw in trays
- Plug and Socket Connections for quick assembly on link systems
- Offering a choice of lumen outputs, delivering up to 4739 lumens
- Life expectancy in excess of 75,000 hours (L80 B10)/ 50,000 hours, Zhaga Book 7 LED
- Efficacies up to 109 lm/W
- Corporate colours made to special order
- Suspended luminaires are supplied complete with 2m Wire Suspensions (variable positioning)
- Colour Stability within 3 MacAdams
- Wireless Lighting Control available, see Connected video for full overview

### Suspended Modules Fixing Centres (mm)

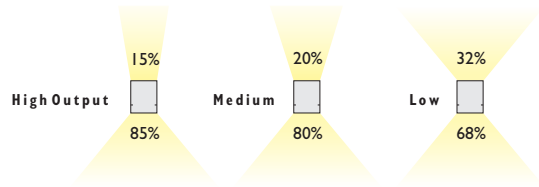
#### 90° Corner Direct Indirect





		High	Medium	Low	
<b>3</b>	<b>Warm White LED (3000K)</b>	<b>CRI 80</b>	<b>27W</b>	<b>21W</b>	<b>15W</b>
	Lumen Output	4551 lm	3530 lm	2494 lm	
	LOR	0.71	0.71	0.71	
	CRI	80	80	80	
	Total Power	30.9W	23.8W	17.6W	
	Power Factor	0.95 /0.92	0.95 /0.92	0.95 /0.92	
	Running Current	0.12A	0.10A	0.07A	
	Inrush Current (Std)	48.0A (320us)	44.0A (320us)	31.0A (320us)	
	Inrush Current (Dim)	36.6A (320us)	36.6A (320us)	36.6A (320us)	
	Efficacy	104 lm/W	105 lm/W	100 lm/W	
	Emergency Output (BLF)	N/A	N/A	N/A	
<b>4</b>	<b>Neutral White LED (4000K)</b>	<b>CRI 80</b>	<b>27W</b>	<b>21W</b>	<b>15W</b>
	Lumen Output	4739 lm	3671 lm	2587 lm	
	LOR	0.71	0.71	0.71	
	CRI	80	80	80	
	Total Power	30.9W	23.8W	17.6W	
	Power Factor	0.95 /0.92	0.95 /0.92	0.95 /0.92	
	Running Current	0.12A	0.10A	0.07A	
	Inrush Current (Std)	48.0A (320us)	44.0A (320us)	31.0A (320us)	
	Inrush Current (Dim)	36.6A (320us)	36.6A (320us)	36.6A (320us)	
	Efficacy	108 lm/W	109 lm/W	104 lm/W	
	Emergency Output (BLF)	N/A	N/A	N/A	

To ensure illumination uniformity High, Medium or Low Output Modules should not be mixed. Modules should always be matched within their output group.



\* % of Direct illumination

## Infinitas® Nano Xcel Corner 90° Direct Indirect

### High Output

LED

27W LED 606mm 1330 LED 27 662

### Medium Output

LED

21W LED 606mm 1330 LED 21 657

### Low Output

LED

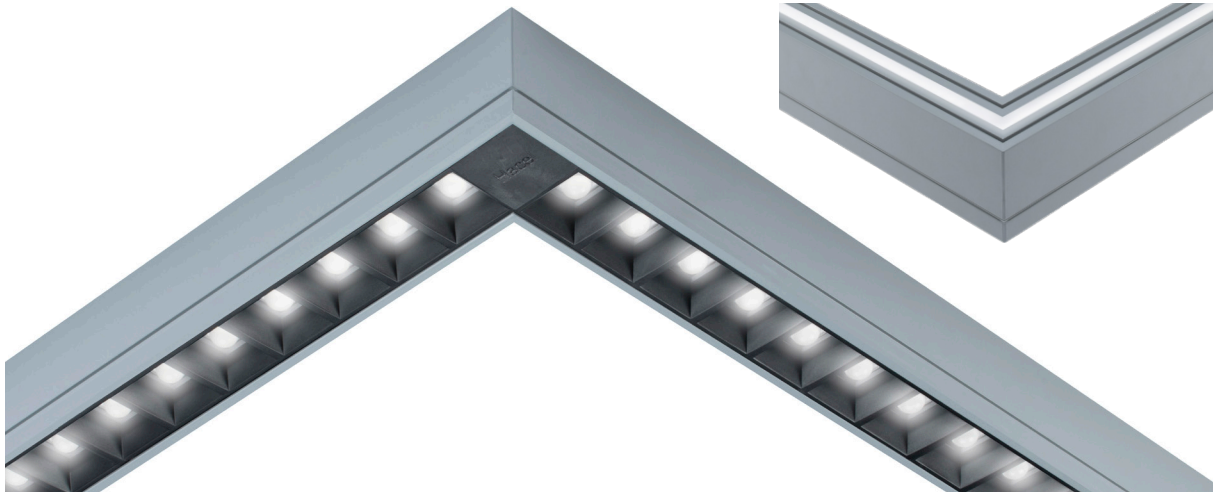
15W LED 606mm 1330 LED 15 652

- IV** Link Suspended (Direct/Indirect)
- IK** Solo Suspended (Direct/Indirect)

- A** Integral Driver
- J** Switch Dim
- S** DALI Dim
- L** DALI Bluetooth

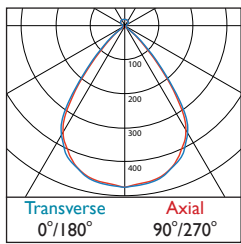
- 3** Warm (3000K) **4** Neutral (4000K)

- I** White (RAL 9010) **2** Urban Graphite (RAL 7046) **3** Black (RAL 9005)



## Infinitas® Nano Xcel Corner 90° Direct Indirect

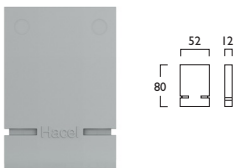
### Photometrics



LOR: 0.77

## Infinitas® Nano Xcel End Caps Direct Indirect

2x End Caps    Suspended       IN1331    **X** CAP000   



Suspended