

## Infinitas® Nano Corners 90° Direct Indirect

Infinitas® Nano by Hacer is a refined LED system. Designed and manufactured in the UK, Infinitas® Nano is sophisticated and minimal in its design. Precision extruded luminaires are available in Suspended, Surface, or Recessed formats.

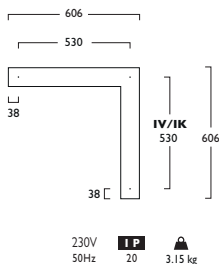
As part of the Infinitas® range, creating continuous lines of uninterrupted uniform lighting, the flexibility of Infinitas® Nano is further enhanced by Direct and Indirect lighting variations and complete illuminated 90° corners are available, offering diversity in architectural lighting design.

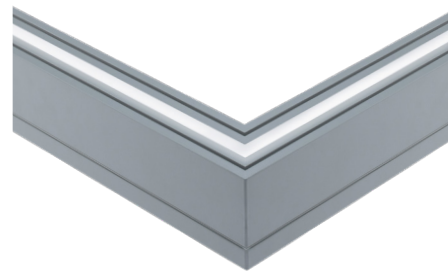
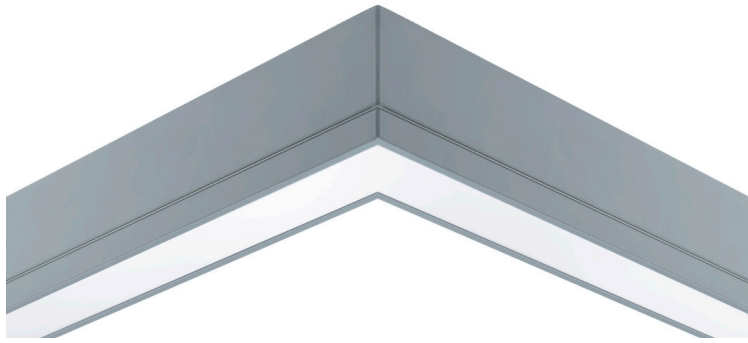
Stylish Solo Modules are also available to compliment the continuous system. Solo Modules are supplied complete with End Caps.

- Available in High, Medium or Low Output Modules
- Low Output Modules with Microprism Refractor and Film achieve UGR <19
- Clip in gear trays for ease of installation - 70% quicker than screw in trays
- Plug and Socket Connections for quick assembly on Link systems
- Offering a choice of lumen outputs, delivering up to 4863 lumens
- Life expectancy in excess of 72,000 hours (L80 B10), Zhaga Book 7 LED
- Efficacies up to 105 lm/W
- Corporate colours made to special order
- Suspended luminaires are supplied complete with 2m Wire Suspensions (variable positioning)
- All Modules are available with MicroPrism Refractors or Opal Diffusers, see option codes
- Colour Stability within 3 MacAdams
- Wireless Lighting Control available, see Connected video for full overview

### Suspended Modules Fixing Centres (mm)

#### 90° Corner Direct Indirect

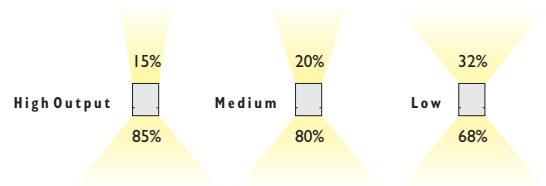




|                                 |                                    | High          | Medium        | Low           |
|---------------------------------|------------------------------------|---------------|---------------|---------------|
| <b>3 Warm White LED (3000K)</b> | <b>CRI 80</b>                      | <b>28W</b>    | <b>21W</b>    | <b>15W</b>    |
|                                 | Lumen Output                       | 4609 lm       | 3503 lm       | 2355 lm       |
|                                 | LOR                                | 0.68          | 0.68          | 0.68          |
|                                 | CRI                                | 80            | 80            | 80            |
|                                 | Total Power                        | 31.4W         | 24.0W         | 16.6W         |
|                                 | Power Factor                       | 0.95 / 0.92   | 0.95 / 0.97   | 0.95 / 0.92   |
|                                 | Running Current                    | 0.12A         | 0.10A         | 0.07A         |
|                                 | Inrush Current (Std)               | 44.0A (320us) | 44.0A (320us) | 44.0A (320us) |
|                                 | Inrush Current (Dim)               | 46.6A (320us) | 36.6A (320us) | 36.6A (320us) |
|                                 | Efficacy                           | 99 lm/W       | 99 lm/W       | 96 lm/W       |
|                                 | Emergency Output (BLF)             | N/A           | N/A           | N/A           |
|                                 | <b>4 Neutral White LED (4000K)</b> | <b>CRI 80</b> | <b>28W</b>    | <b>21W</b>    |
| Lumen Output                    |                                    | 4863 lm       | 3688 lm       | 2468 lm       |
| LOR                             |                                    | 0.68          | 0.68          | 0.68          |
| CRI                             |                                    | 80            | 80            | 80            |
| Total Power                     |                                    | 31.4W         | 24.0W         | 16.6W         |
| Power Factor                    |                                    | 0.95 / 0.92   | 0.95 / 0.97   | 0.95 / 0.92   |
| Running Current                 |                                    | 0.12A         | 0.10A         | 0.07A         |
| Inrush Current (Std)            |                                    | 44.0A (320us) | 44.0A (320us) | 44.0A (320us) |
| Inrush Current (Dim)            |                                    | 46.6A (320us) | 36.6A (320us) | 36.6A (320us) |
| Efficacy                        |                                    | 105 lm/W      | 104 lm/W      | 101 lm/W      |
| Emergency Output (BLF)          |                                    | N/A           | N/A           | N/A           |

\* % of Direct illumination

To ensure illumination uniformity High, Medium or Low Output Modules should not be mixed. Modules should always be matched within their output group.



## Infinitas® Nano Corners 90° Direct Indirect

### High Output

|     |     |       |      |     |    |   |    |   |   |   |      |            |
|-----|-----|-------|------|-----|----|---|----|---|---|---|------|------------|
| LED | ☀️  | 📏     | 👁️   | 📐   | 📐  | 🔌 | ⚙️ | 📶 | 🏠 | 🏠 | Opal | Microprism |
| 28W | LED | 606mm | 1328 | LED | 28 |   |    |   |   |   | 687  | 702        |

### Medium Output

|     |     |       |      |     |    |   |    |   |   |   |      |            |
|-----|-----|-------|------|-----|----|---|----|---|---|---|------|------------|
| LED | ☀️  | 📏     | 👁️   | 📐   | 📐  | 🔌 | ⚙️ | 📶 | 🏠 | 🏠 | Opal | Microprism |
| 21W | LED | 606mm | 1328 | LED | 21 |   |    |   |   |   | 682  | 697        |

### Low Output

|     |     |       |      |     |    |   |    |   |   |   |      |            |
|-----|-----|-------|------|-----|----|---|----|---|---|---|------|------------|
| LED | ☀️  | 📏     | 👁️   | 📐   | 📐  | 🔌 | ⚙️ | 📶 | 🏠 | 🏠 | Opal | Microprism |
| 15W | LED | 606mm | 1328 | LED | 15 |   |    |   |   |   | 677  | 692        |

- IV** Link Suspended (Direct/Indirect)
- IK** Solo Suspended (Direct/Indirect)

- A** Integral Driver
- J** Switch Dim
- S** DALI Dim
- L** DALI Bluetooth

- 3** Warm (3000K)   **4** Neutral (4000K)

- I** White (RAL 9010)   **2** Urban Graphite (RAL 7046)   **3** Black (RAL 9005)

#### Options

**344** 3x5m Suspensions (wires only)

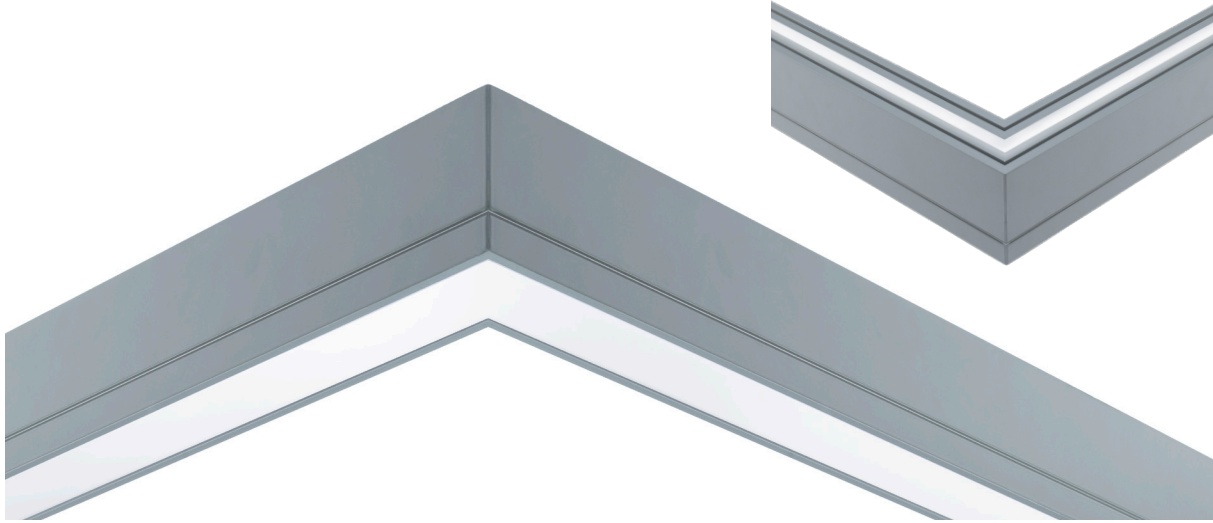
#### Opal Option

**704** Corner Opal Diffuser

#### Microprism Option

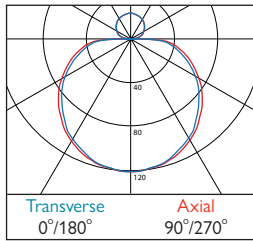
**709** Corner Microprism Refractor and Film

Only Low Output Modules with Microprism Refractor and Film achieve UGR<19.

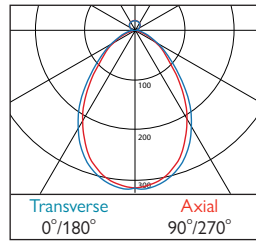


## Infinitas® Nano Corners 90° Direct Indirect

### Photometrics



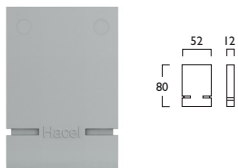
**677/682/687** LOR: 0.67  
Opal



**692/697/702** LOR: 0.63  
Microprism

## Infinitas® Nano End Caps Direct Indirect

2x End Caps **Suspended** **IN1331** **X** **CAP000**



Suspended