

# Infinitas® Nano Corners 90° Direct Indirect

Infinitas® Nano by Hacer is a refined LED system. Designed and manufactured in the UK, Infinitas® Nano is sophisticated and minimal in its design. Precision extruded luminaires are available in Surface, Suspended or Recessed Bezel formats.

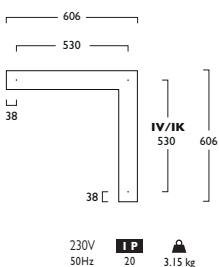
As part of the Infinitas® range, creating continuous lines of uninterrupted uniform lighting, the flexibility of Infinitas® Nano is further enhanced by Direct and Indirect lighting variations and complete illuminated 90° corners are available, offering diversity in architectural lighting design.

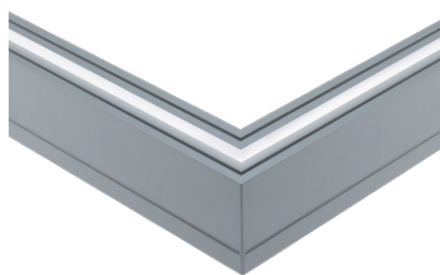
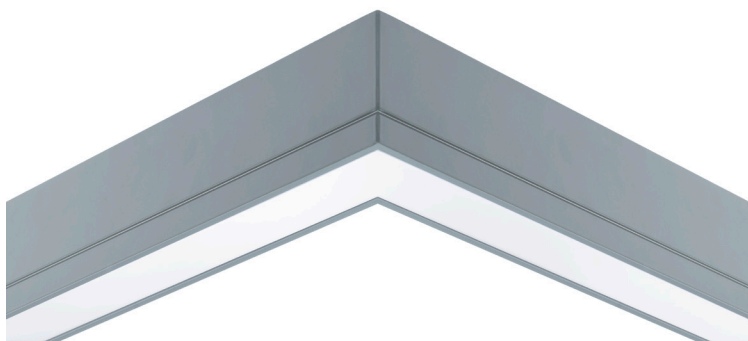
Stylish Solo Modules are also available to compliment the continuous system. Solo Modules are supplied complete with End Caps.

- Available in High, Medium or Low Output Modules
- Low Output Modules with Microprism Refractor and Film achieve UGR <19
- Clip in gear trays for ease of installation - 70% quicker than screw in trays
- Plug and Socket Connections for quick assembly on Link systems
- Offering a choice of lumen outputs, delivering up to 4863 lumens
- Life expectancy in excess of 72,000 hours (L80 B10), Zhaga Book 7 LED
- Efficacies up to 105 lm/W
- Corporate colours made to special order
- Suspended luminaires are supplied complete with 2m Wire Suspensions (variable positioning)
- All Modules are available with MicroPrism Refractors or Opal Diffusers, see option codes
- Colour Stability within 3 MacAdams
- Wireless Lighting Control available, see Connected video for full overview

### Suspended Modules Fixing Centres (mm)

### 90° Corner Direct Indirect

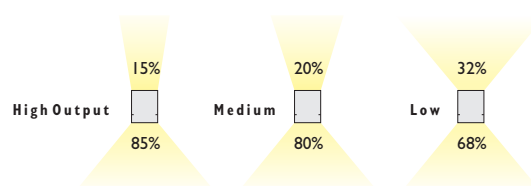




		High	Medium	Low
<b>3</b>	<b>Warm White LED (3000K)</b>	<b>CRI 80 28W</b>	<b>21W</b>	<b>15W</b>
	Lumen Output	4609 lm	3503 lm	2355 lm
	LOR	0.68	0.68	0.68
	CRI	80	80	80
	Total Power	31.4W	24.0W	16.6W
	Power Factor	0.95 / 0.92	0.95 / 0.97	0.95 / 0.92
	Running Current	0.12A	0.10A	0.07A
	Inrush Current (Std)	44.0A (320us)	44.0A (320us)	44.0A (320us)
	Inrush Current (Dim)	46.6A (320us)	36.6A (320us)	36.6A (320us)
	Efficacy	99 lm/W	99 lm/W	96 lm/W
	Emergency Output (BLF)	N/A	N/A	N/A
<b>4</b>	<b>Neutral White LED (4000K)</b>	<b>CRI 80 28W</b>	<b>21W</b>	<b>15W</b>
	Lumen Output	4863 lm	3688 lm	2468 lm
	LOR	0.68	0.68	0.68
	CRI	80	80	80
	Total Power	31.4W	24.0W	16.6W
	Power Factor	0.95 / 0.92	0.95 / 0.97	0.95 / 0.92
	Running Current	0.12A	0.10A	0.07A
	Inrush Current (Std)	44.0A (320us)	44.0A (320us)	44.0A (320us)
	Inrush Current (Dim)	46.6A (320us)	36.6A (320us)	36.6A (320us)
	Efficacy	105 lm/W	104 lm/W	101 lm/W
	Emergency Output (BLF)	N/A	N/A	N/A

\* % of Direct illumination

To ensure illumination uniformity High, Medium or Low Output Modules should not be mixed. Modules should always be matched within their output group.



## Infinitas® Nano Corners 90° Direct Indirect

### High Output

LED	1328	28	687	702
28W LED	606mm	1328	28	687
Opal	Microprism			

### Medium Output

LED	1328	21	682	697
21W LED	606mm	1328	21	682
Opal	Microprism			

### Low Output

LED	1328	15	677	692
15W LED	606mm	1328	15	677
Opal	Microprism			

IV Link Suspended (Direct/Indirect)

IK Solo Suspended (Direct/Indirect)

A Integral Driver

J Switch Dim

S DALI Dim

L DALI Bluetooth

3 Warm (3000K) 4 Neutral (4000K)

I White (RAL 9010) 2 Urban Graphite (RAL 7046) 3 Black (RAL 9005)

### Options

344 3x 5m Suspensions (wires only)

### Opal Option

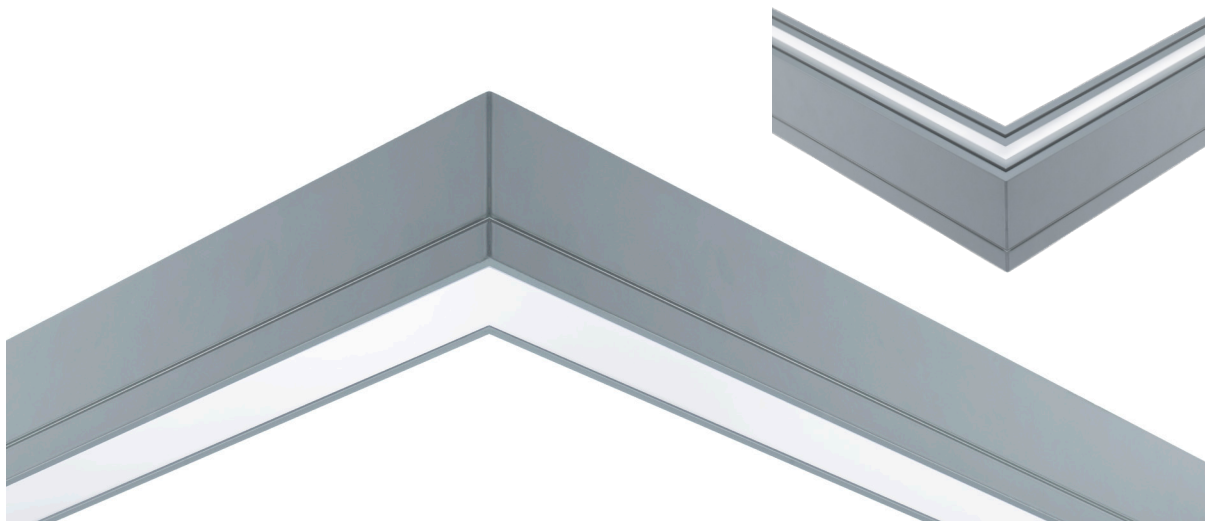
704 Corner Opal Diffuser

### Microprism Option

709 Corner Microprism Refractor and Film

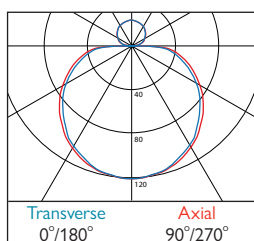
Only Low Output Modules with Microprism Refractor and Film achieve UGR<19.

**Hacel**  
Fluent in Lighting



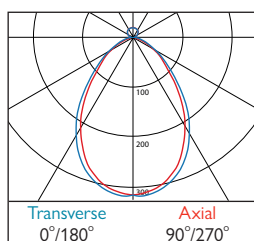
## Infinitas® Nano Corners 90° Direct Indirect

### Photometrics



**677/682/687** LOR: 0.67

Opal

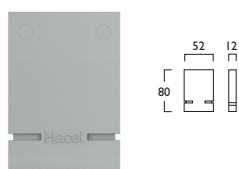


**692/697/702** LOR: 0.63

Microprism

## Infinitas® Nano End Caps Direct Indirect

2x End Caps **Suspended**    **IN1331** **X** **CAP000** 



Suspended