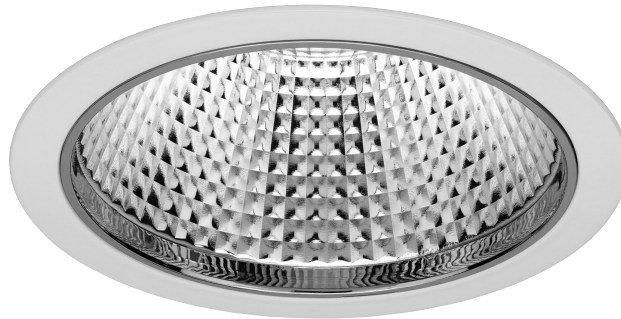


IMPORTANT INFORMATION

Micro® ID1286/ ID1287



1. ***Ensure electrical supply is isolated before fitting and/or making any electrical connections. Luminaires should be disconnected from the mains supply before any High Voltage Insulation tests are carried out.***
2. Make an 90mm diameter cut out in the mounting surface, hole saws are available in this size. Ensure hole saw is sharp to avoid damage to compressed fibre tiles.
3. A minimum ceiling void clearance around cut out of 300mm and minimum 60mm above the head of the luminaire is required for ventilation purposes.
4. Bring the Mains/Dimming cabling through the cut out.
5. Lift the hinged cover of the Driver to reveal the Mains/Dimming terminals.
6. Make the Mains/Dimming connections to the Driver according to the information on the Driver cover. The secondary side of Driver is pre-wired and does not require any further wiring.
7. If there is no Earth terminal on Driver, the Mains/Dimming cabling into the Driver must be double insulated.
8. Fit the relevant Cable Grips located under the hinged lid to secure cabling and close lid securely.
9. For Emergency versions the battery connection should be made only when a permanent mains supply is in place.
10. Feed the Driver through the cut out and locate in the ceiling void.
11. Carefully lift the legs of the Fixing Springs and locate into the cut out.
A bead of sealant between the Bezel and mounting surface is required for IP Rated Options.
12. Finish the installation by lifting the leg of the second Spring and ease into the cut out.
13. Centre the luminaire to ensure none of the cut out is visible.
14. Reconnect the electrical supply and test the installation.

Continued Over

Micro® ID1286/ ID1287

Cylo/Luminescent Halo

1. *Installation of these Options will be easier before luminaire is installed into ceiling.*
2. Remove chrome Reflector Retainer by gently inserting a Terminal Driver between it and the Outer Bezel.
3. Lever the Retainer so that one of the tabs is free from its aperture in the Outer Bezel, and then pull the Retainer free.
4. Sit the luminaire so that the aperture is uppermost with the Reflector correctly located.
5. Insert the Option so that two of the tabs locate into the slots in on the inside of the Bezel.
6. Locate the third tab into its slot by slightly flexing the Option.

Flush Diffuser Installation

1. *Installation of the Flush Diffuser will be easier before luminaire is installed into ceiling.*
2. Remove chrome Reflector Retainer by gently inserting a Terminal Driver between it and the Outer Bezel.
3. Lever the Retainer so that one of the tabs is free from its aperture in the Outer Bezel, and then pull the Retainer free.
4. Sit the luminaire so that the aperture is uppermost with the Reflector correctly located.
5. With the flat face of the Flush Diffuser to the outside, slide the Flush Diffuser so that the two solid tabs locate into the slots in on the inside of the Bezel.
The diffuser will flex slightly to allow both tabs to be inserted.
6. Using a wide flat bladed Screwdriver, push the two flexible prongs inwards, simultaneously pushing the Diffuser so that it locates fully into the Bezel.