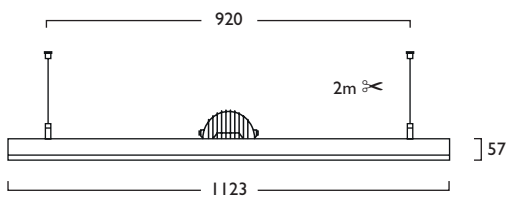


5

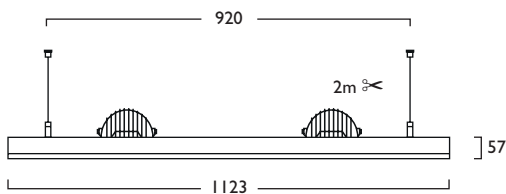
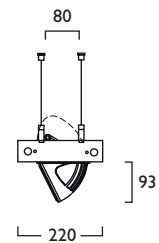
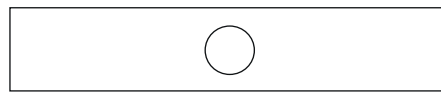
Linear Light5 Aleda®

Link & Solo Suspended

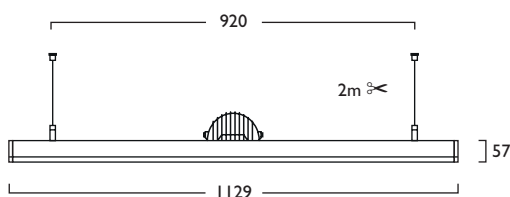
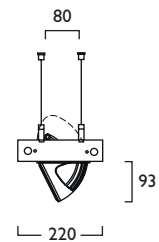
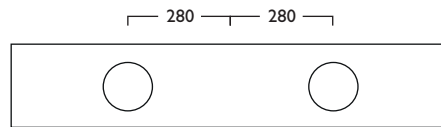
- Exciting and imaginative surface or suspended horizontal system
- Allows a diverse range of lighting scenarios to be created
- Encompasses design, performance and quality engineering
- Available in a choice of powder coated finishes including corporate colours to order
- Branded components ensure maximum level of performance and reliability
- Suspended Modules are supplied with 4x 2m Wire Suspensions
- Wireless Lighting Control available, see Connected video for full overview



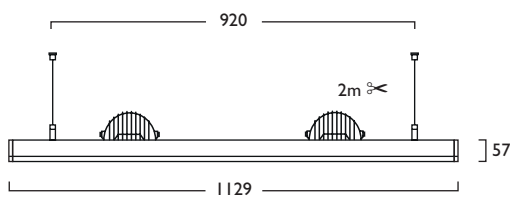
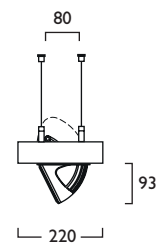
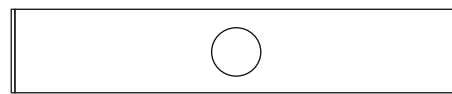
Link Suspended Aleda Solo



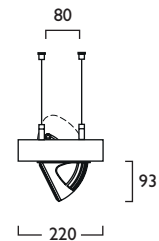
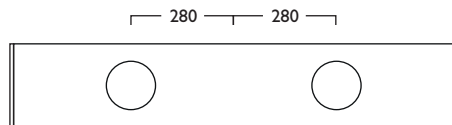
Link Suspended Aleda Duet

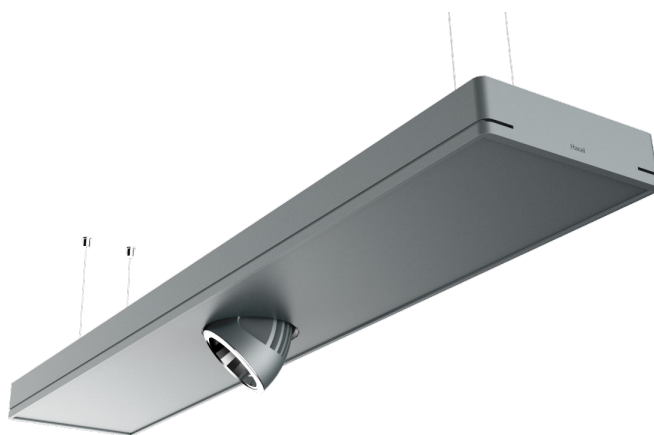


Solo Suspended Aleda Solo



Solo Suspended Aleda Duet





Linear Light5 Aleda®

Link & Solo Modules

		☀		📄		👁		☐		K		🔊		+		▲	
		LED CRI 80															
1x 12W	LED	1123mm	1072	LED	12	+	377										
1x 17W	LED	1123mm	1072	LED	17	+	377										
1x 24W	LED	1123mm	1072	LED	24	+	377										
1x 31W	LED	1123mm	1072	LED	31	+	377										
2x 12W	LED	1123mm	1074	LED	12	+	377										
2x 17W	LED	1123mm	1074	LED	17	+	377										
2x 24W	LED	1123mm	1074	LED	24	+	377										
2x 31W	LED	1123mm	1074	LED	31	+	377										

		☀		📄		👁		☐		K		🔊		+		▲	
		LED CRI 90															
1x 12W	LED	1123mm	1073	LED	12	+	378										
1x 17W	LED	1123mm	1073	LED	17	+	378										
1x 24W	LED	1123mm	1073	LED	24	+	378										
1x 31W	LED	1123mm	1073	LED	31	+	378										
2x 12W	LED	1123mm	1075	LED	12	+	378										
2x 17W	LED	1123mm	1075	LED	17	+	378										
2x 24W	LED	1123mm	1075	LED	24	+	378										
2x 31W	LED	1123mm	1075	LED	31	+	378										

230V 50Hz IP20 920 X 80mm 8.5 kg

- Stylish Aleda® LED in Solo or Duet format neatly integrated into LL5 Module
- Available in a choice of lumen outputs, delivering up to 5342 lumens
- Efficacies up to 134 lm/W
- Single point Zhaga Book 3 LED
- Life expectancy in excess of 50,000 hours (L90 B10)
- Luminaires feature smooth and precise pan and tilt adjustment
- Link and Solo Modules available
- 4x 2m Suspension Wires and Chrome Clutches for ease of adjustment
- Wireless Lighting Control available, see Connected video for full overview

LA Link Suspended LD Solo Suspended

Gear type F must be operated through a DSI

- A Integral Driver/Remote
- F Digital Dim
- J Switch Dim
- S DALI Dim
- L DALI Bluetooth

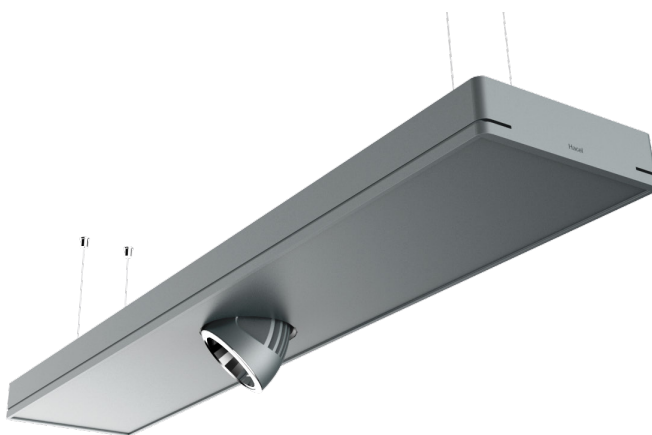
3 Warm (3000K) 4 Neutral (4000K)

1 White (RAL 9010) 2 Urban Graphite (RAL 7046) 3 Black (RAL 9005)

Reflector	CRI 80	CRI 90
384 1x Narrow Beam	379	380
385 1x Wide Beam	381	382
480 2x Narrow Beam	379	380
481 2x Wide Beam	381	382

- 556 4x 5m Suspensions (wires only)
- 557 2x 2m Single point, twin suspensions (wires only)
- 144 2x 5m Single point, twin suspensions (wires only)

Luminescent Halo, Baffle Options Shown



Linear Light5 Aleda®

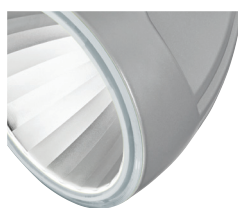
3	Warm White LED (3000K)	CRI 80				CRI 90			
		12W	17W	24W	31W	12W	17W	24W	31W
	Lumen Output	2029 lm	2856 lm	4042 lm	5123 lm	1719 lm	2419 lm	3424 lm	4340 lm
	LOR	0.81	0.81	0.81	0.81	0.81	0.81	0.81	0.81
	CRI	80	80	80	80	90	90	90	90
	Total Power	13.1W	18.2W	25.3W	32.5W	13.1W	18.2W	25.3W	32.5W
	Power Factor	0.90	0.90	0.95	0.96	0.90	0.90	0.95	0.96
	Running Current	0.06A	0.09A	0.12A	0.15A	0.06A	0.09A	0.12A	0.15A
	Inrush Current (Std)	8.0A (80us)	8.0A (80us)	8.0A (40us)	10.0A (100us)	8.0A (80us)	8.0A (80us)	8.0A (40us)	10.0A (100us)
	Inrush Current (Dim)	18.0A (140us)	25.0A(141us)	28.0A(195us)	28.0A (195us)	18.0A (140us)	25.0A (141us)	28.0A (195us)	28.0A (195us)
	Efficacy	125 lm/W	127 lm/W	129 lm/W	127 lm/W	106 lm/W	107 lm/W	109 lm/W	108 lm/W
	Emergency Output (BLF)	446 lm (22%)	456 lm (16%)	444 lm (11%)	461 lm (9%)	378 lm (22%)	387 lm (16%)	376 lm (11%)	390 lm (9%)

4	Neutral White LED (4000K)	CRI 80				CRI 90			
		12W	17W	24W	31W	12W	17W	24W	31W
	Lumen Output	2116 lm	2978 lm	4215 lm	5342 lm	1806 lm	2542 lm	3597 lm	4559 lm
	LOR	0.81	0.81	0.81	0.81	0.81	0.81	0.81	0.81
	CRI	80	80	80	80	90	90	90	90
	Total Power	13.1W	18.2W	25.3W	32.5W	13.1W	18.2W	25.3W	32.5W
	Power Factor	0.90	0.90	0.95	0.96	0.90	0.90	0.95	0.96
	Running Current	0.06A	0.09A	0.12A	0.15A	0.06A	0.09A	0.12A	0.15A
	Inrush Current (Std)	8.0A (80us)	8.0A (80us)	8.0A (40us)	10.0A (100us)	8.0A (80us)	8.0A (80us)	8.0A (100us)	10.0A (100us)
	Inrush Current (Dim)	18.0A (140us)	25.0A (141us)	28.0A(195us)	28.0A (195us)	18.0A (140us)	25.0A (141us)	28.0A (195us)	28.0A (195us)
	Efficacy	130 lm/W	132 lm/W	134 lm/W	133 lm/W	111 lm/W	113 lm/W	115 lm/W	113 lm/W
	Emergency Output (BLF)	465 lm (22%)	476 lm (16%)	463 lm (11%)	480 lm (9%)	397 lm (22%)	406 lm (16%)	395 lm (11%)	410 lm (9%)

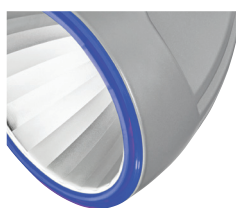
Table applies to one LED Light Engine

Options

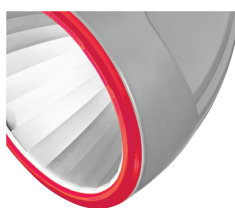
■ Luminescent Halo, Baffle Options



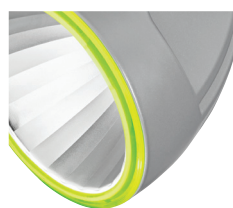
473 1x / 486 2x
Etched Ice



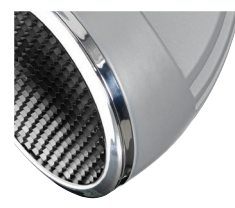
474 1x / 487 2x
Neptune Blue



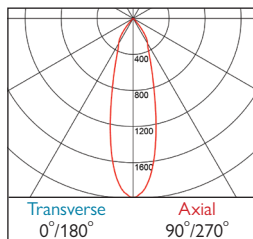
475 1x / 488 2x
Mars Red



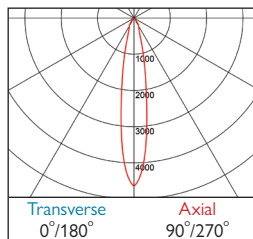
477 1x / 489 2x
Acid Green



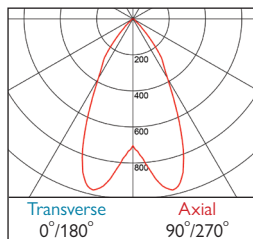
478 1x / 490 2x
Anti Glare Baffle



377-378 DLOR: 0.81



379-380 DLOR: 0.83



381-382 DLOR: 0.86