



## Infinitas® Micro Corners 90° Direct

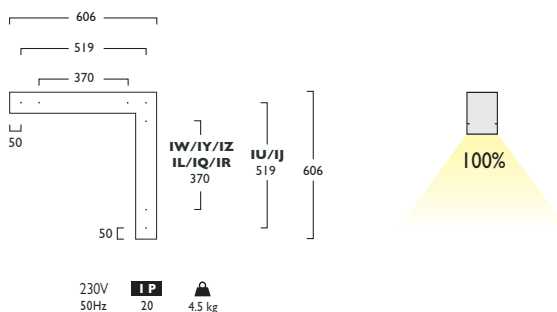
Infinitas® Micro by Hacer is a refined LED system. Designed and manufactured in the UK, Infinitas® Micro is sophisticated and minimal in its design. Precision extruded luminaires are available in Surface, Suspended or Recessed in both Bezel and Bezel free formats. As part of the Infinitas® range, creating continuous lines of uninterrupted uniform lighting, the flexibility of Infinitas® Micro is further enhanced by Direct and Indirect lighting variations and complete illuminated 90° corners are available, offering diversity in architectural lighting design.

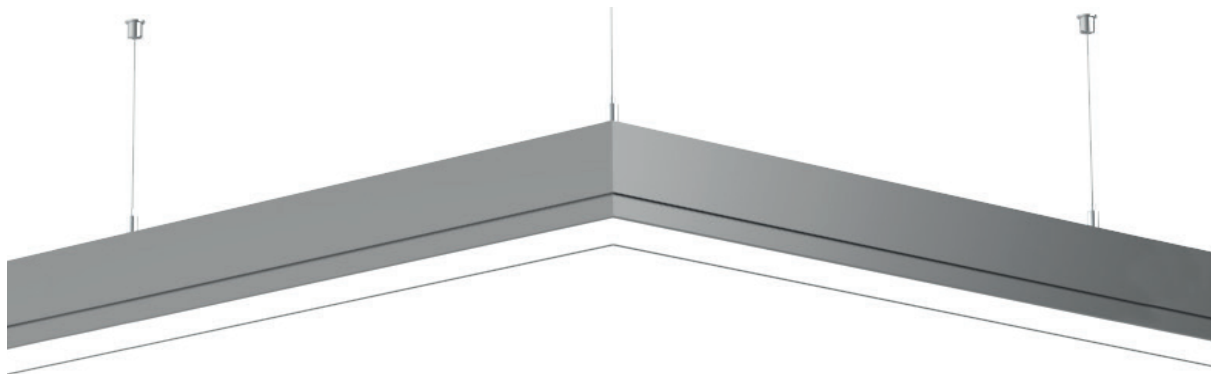
Stylish solo modules are also available to compliment the continuous system. Solo Modules are supplied complete with End Caps.

- Available in High, Medium or Low Output Modules
- Medium and Low Output Modules with Microprism Refractor and Film achieve UGR <19
- Plug and socket connections for quick assembly on link systems
- Offering a choice of lumen outputs, delivering up to 4098 lumens
- Life expectancy in excess of 72,000 hours (L80 B10), Zhaga Book 7 LED
- Efficacies up to 133 lm/W
- Corporate colours made to special order
- Suspended luminaires are supplied complete with 2m Wire Suspensions (variable positioning)
- All Modules are available with MicroPrism Refractors or Opal Diffusers, see option codes
- Wireless Lighting Control available, see Connected video for full overview

### Suspended/Surface/Recessed Modules Fixing Centres (mm)

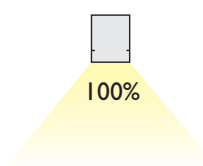
#### 90° Corner Direct





		High	Medium	Low
<b>3 Warm White LED (3000K)</b>	<b>CRI 80</b>	<b>22W</b>	<b>15W</b>	<b>9W</b>
	Lumen Output	3916 lm	2806 lm	1614 lm
	LOR	0.73	0.73	0.63
	CRI	80	80	80
	Total Power	24.3W	16.1W	9.0W
	Power Factor	0.95	0.98	0.98
	Running Current	0.11A	0.07A	0.04A
	Inrush Current (Std)	15.0A (250us)	32.0A (240us)	32.0A (240us)
	Inrush Current (Dim)	29.0A (180us)	29.0A (180us)	29.0A (180us)
	Efficacy	117 lm/W	127 lm/W	112 lm/W
	Emergency Output (BLF)	469 (12%)	505 (18%)	532 (33%)
	<b>4 Neutral White LED (4000K)</b>	<b>CRI 80</b>	<b>22W</b>	<b>15W</b>
Lumen Output		4098 lm	2936 lm	1690 lm
LOR		0.73	0.73	0.63
CRI		80	80	80
Total Power		24.3W	16.1W	9.0W
Power Factor		0.95	0.98	0.98
Running Current		0.11A	0.07A	0.04A
Inrush Current (Std)		15.0A (250us)	32.0A (240us)	32.0A (240us)
Inrush Current (Dim)		29.0A (180us)	29.0A (180us)	29.0A (180us)
Efficacy		123 lm/W	133 lm/W	118 lm/W
Emergency Output (BLF)		491 (12%)	528 (18%)	557 (33%)

To ensure illumination uniformity High, Medium or Low Output Modules should **not** be mixed. Modules should **always** be matched within their output group.



## Infinitas® Micro Corners 90° Direct

### High Output

LED	☀	☾	☐	K	⚡	+	▲	▲
	Opal	Microprism						
22W LED 606mm	1136	LED	22				535	635

### Medium Output

15W LED 606mm	1136	LED	15				535	635
---------------	------	-----	----	--	--	--	-----	-----

### Low Output

9W LED 606mm	1136	LED	09				636	536
--------------	------	-----	----	--	--	--	-----	-----

770mm Not available in Emergency Gear Types

- IU** Link Suspended   **IW** Link Surface   **IY** Link Recessed Bezel   **IZ** Link Recessed Bezel Free
- IJ** Solo Suspended   **IL** Solo Surface   **IQ** Solo Recessed Bezel   **IR** Solo Recessed Bezel Free

- A** Integral Driver/Remote
- E** Emergency
- J** Switch Dim
- K** Switch Dim + Emergency
- S** DALI Dim
- T** DALI Dim + Emergency
- C** DALI Dim + DALI Emergency
- L** DALI Bluetooth
- M** DALI Bluetooth + Emergency

- 3** Warm (3000K)   **4** Neutral (4000K)
- 1** White (RAL 9010)   **2** Urban Graphite (RAL 7046)   **3** Black (RAL 9005)

### Options

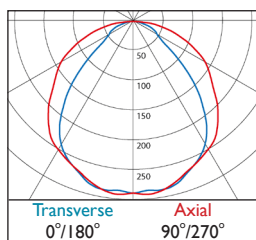
- 344** 3x 5m Suspensions (wires only)
- 605** Corner Opal Diffuser
- 611** Corner Microprism Refractor and Film

Only Low Output Modules with Microprism Refractor and Film achieve UGR<19.

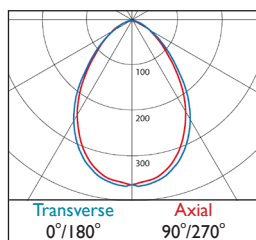


## Infinitas® Micro Corners 90° Direct

### Photometrics



**535** DLOR: 0.73



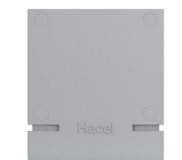
**536** DLOR: 0.63

## Infinitas® Micro - End Caps Direct

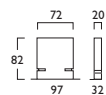
2x End Caps	Surface/Suspended	IN1110	X CAP000	—
2x End Caps	Recessed Bezel	IN1111	X CAP000	—
2x End Caps	Recessed Bezel Free	IN1112	X CAP000	—



Surface/Suspended



Recessed Bezel



Recessed Bezel Free

