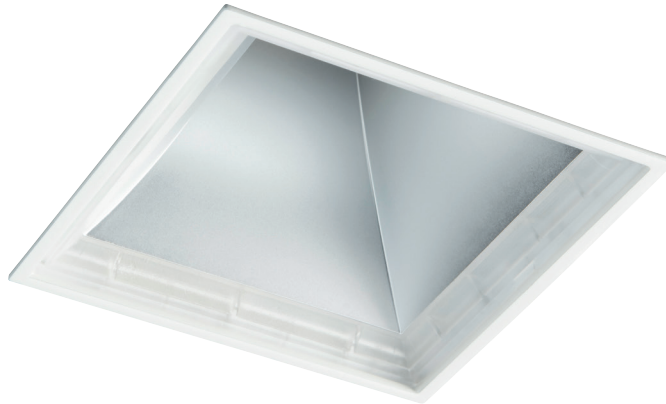


# IMPORTANT INFORMATION

## Microbezel® Square ID1296/ ID1297

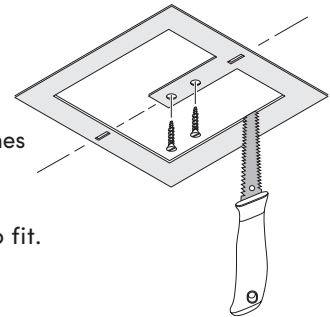


1. **Ensure electrical supply is isolated before fitting and/or making any electrical connections.**  
**Luminaires should be disconnected from the mains supply before any High Voltage Insulation tests are carried out.**

2. A minimum ceiling void clearance around cut out of 300mm and minimum 60mm above the head of the luminaire is required for ventilation purposes.

### Ceiling Cutout Template

3. Use the Ceiling Cutout Template provided to ensure a accurate cutout.
4. Place the template against the ceiling, use the 2 rectangular cutouts to align with any guide lines then secure with 2x screws (not supplied) as shown.  
Proceed to cut the inside face of the template with a Jab/Pad Saw.  
Once cut, remove the Template revealing a 84 x 84mm aperture for the luminaire to fit.



5. Bring the Mains/Dimming cabling through the cutout.
6. Lift the hinged cover of the Driver to reveal the Mains/Dimming terminals.
7. Make the Mains/Dimming connections to the Driver according to the information on the Driver cover.  
The secondary side of Driver is pre-wired and does not require any further wiring.
8. If there is no Earth terminal on Driver, the Mains/Dimming cabling into the Driver must be double insulated.
9. Fit the relevant Cable Grips located under the hinged lid to secure cabling and close lid securely.
10. For Emergency versions, the battery connection should be made only when a permanent mains supply is in place.
11. Feed the Driver through the cut out and locate in the ceiling void.
12. Carefully lift the leg of one of the Fixing Springs and locate into the cut out.
13. Finish the installation by lifting the leg of the second Spring and ease into the cut out.
14. Centre the luminaire to ensure none of the cut out is visible.
15. Reconnect the electrical supply and test the installation.