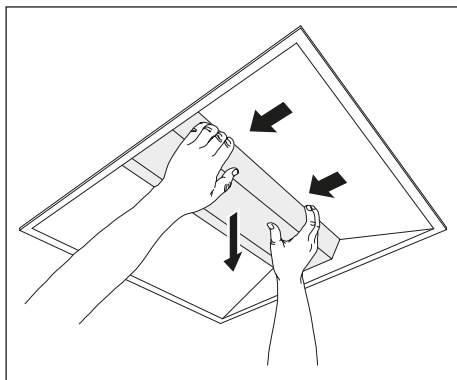


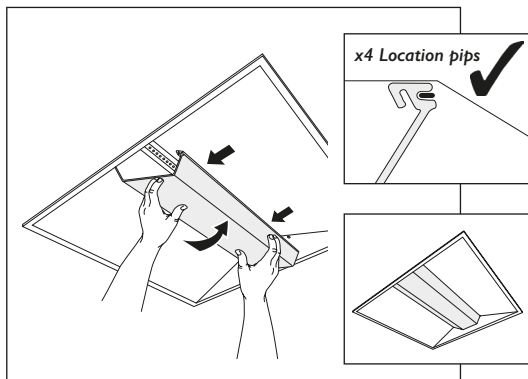
Cleaning refractor

1



Clean refractor with damp lint free cloth

2



IMPORTANT INFORMATION

iMod Evolva Recessed

IM1196



Disconnect electricity supply before installation

To be installed by qualified personnel only.

When installing, we recommend wearing disposable gloves to avoid fingerprinting to the paint work of the luminaire.

Read leaflet fully before installation.

Lamps should be installed and used within the lamp manufacturers guidelines.

Hacel[®]
Fluent in Lighting

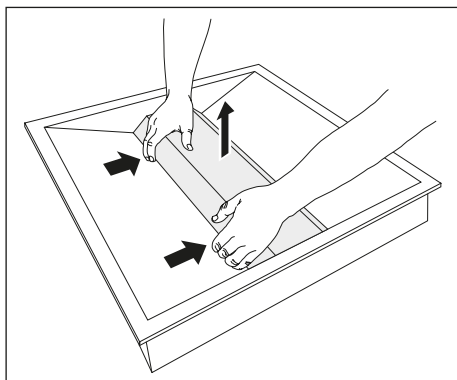
THE SILVERLINK, WALLSEND, NEWCASTLE UPON TYNE,
TYNE & WEAR, NE28 9ND

Technical: (0191) 280 9914
Email: technical@hacel.co.uk
Web: www.hacel.co.uk

10/2020

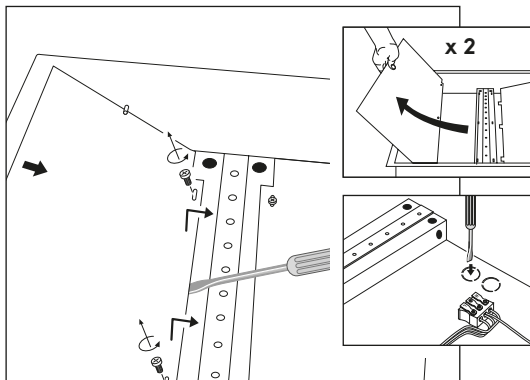
Installation

1



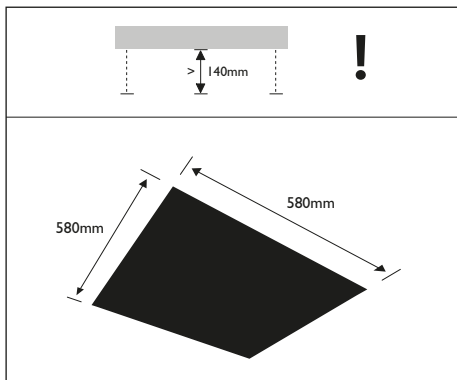
Wearing latex gloves will prevent marking

2



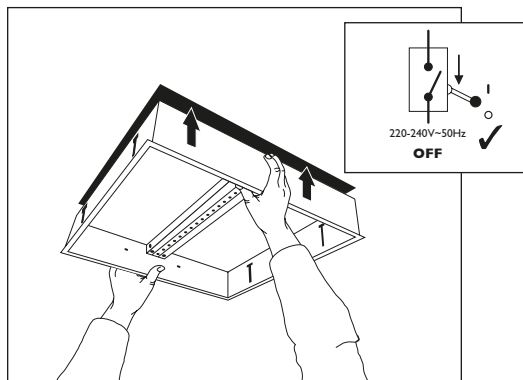
When sliding reflector out, do not slide over LED's

3

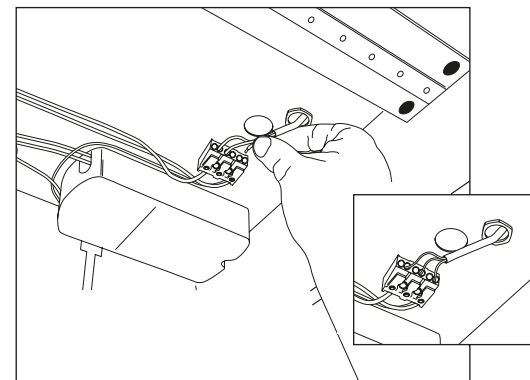


Wiring preparation

4

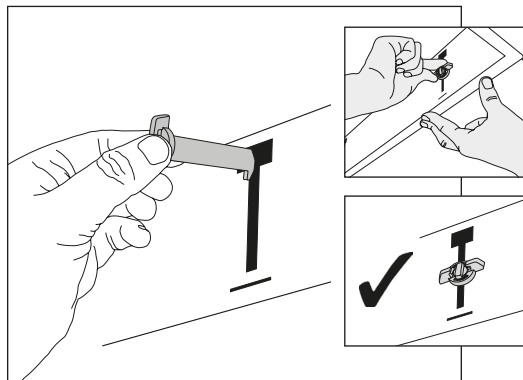


2



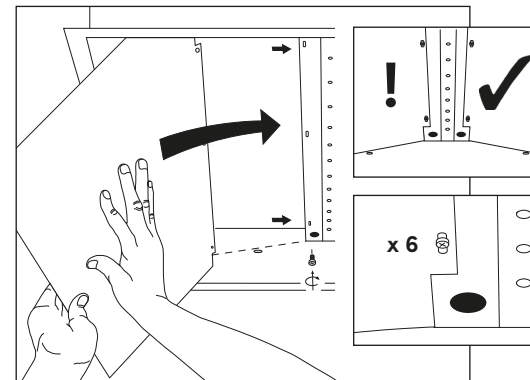
For Emergency versions ensure battery bullet connection is made only when a permanent mains supply is present.

5



Hand tighten only

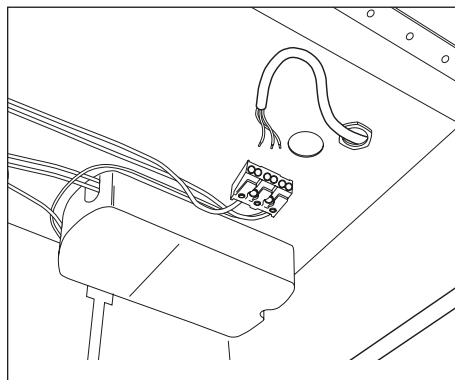
3



When sliding reflector in, do not slide over LED's

Wiring preparation

1



Cable gland not supplied

4

