

Infinitas® Micro 90° Corners *Direct Indirect*

Infinitas® Micro by Hacer is a refined LED system. Designed and manufactured in the UK, Infinitas® Micro is sophisticated and minimal in its design. Precision extruded luminaires are available in Surface, Suspended or Recessed in both Bezel and Bezel free formats.

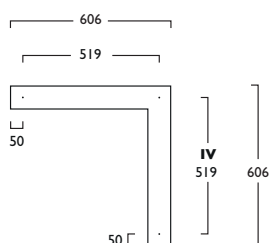
As part of the Infinitas® range, creating continuous lines of uninterrupted uniform lighting, the flexibility of Infinitas® Micro is further enhanced by Direct and Indirect lighting variations and complete illuminated 90° corners are available, offering diversity in architectural lighting design.

Stylish solo modules are also available to compliment the continuous system.

- Available in a choice of lumen outputs, delivering up to 4857 lumens
- Life expectancy in excess of 72,000 hours (L80 B10)
- Efficacies up to 124 lm/W
- High and Medium outputs have an Opal polycarbonate refractor designed for maximum performance, TP(b) rated
- Low Output Modules have a MicroPrism refractor suitable for office and educational lighting, UGR <19
- Suspended luminaires are supplied complete with 2m Wire Suspensions (variable positioning)

Suspended Modules **Fixing Centres** (mm)

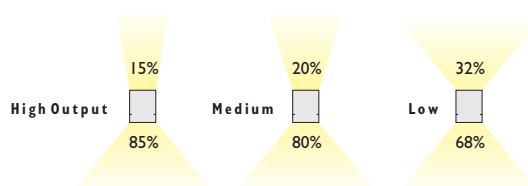
90° Corner Direct Indirect

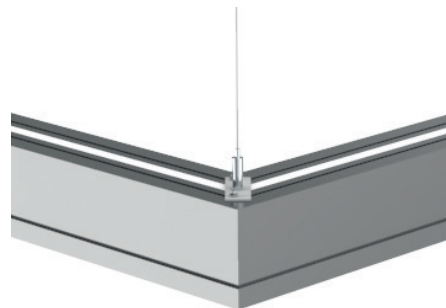


230V
50Hz

IP
20

4.5 kg

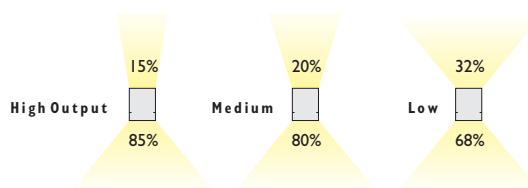




		High	Medium	Low
3 Warm White LED (3000K)	CRI 80 27W	20W	13W	
Lumen Output	4636 lm	3526 lm	2334 lm	
LOR	0.72	0.72	0.64	
CRI	80	80	80	
Total Power	29.5W	21.3W	14.2W	
Power Factor	0.95	0.95	0.95	
Running Current	0.14A	0.10A	0.07A	
Inrush Current (Std)	20.0A (250us)	37.0A (240us)	37.0A (240us)	
Inrush Current (Dim)	72.0A (180us)	72.0A (180us)	72.0A (180us)	
Efficacy	113 lm/W	119 lm/W	105 lm/W	
Emergency Output (BLF)	469 (12%)*	505 (18%)*	532 (33%)*	
4 Neutral White LED (4000K)	CRI 80 27W	20W	13W	
Lumen Output	4857 lm	3695 lm	2449 lm	
LOR	0.72	0.72	0.64	
CRI	80	80	80	
Total Power	29.5W	21.3W	14.2W	
Power Factor	0.95	0.95	0.95	
Running Current	0.14A	0.10A	0.07A	
Inrush Current (Std)	20.0A (250us)	37.0A (240us)	37.0A (240us)	
Inrush Current (Dim)	72.0A (180us)	72.0A (180us)	72.0A (180us)	
Efficacy	118 lm/W	124 lm/W	110 lm/W	
Emergency Output (BLF)	491 (12%)*	528 (18%)*	557 (33%)*	

* % of Direct illumination

To ensure illumination uniformity High, Medium or Low Output Modules should not be mixed. Modules should always be matched within their output group.



Infinitas® Micro 90° Corners Direct Indirect

High Output

LED	27W	LED	606mm	1138	LED	27	537
-----	-----	-----	-------	------	-----	----	-----

Medium Output

LED	20W	LED	606mm	1138	LED	20	538
-----	-----	-----	-------	------	-----	----	-----

Low Output

LED	13W	LED	606mm	1138	LED	13	539
-----	-----	-----	-------	------	-----	----	-----

Link Modules do not have a cable entry hole and require a Power Supply Module/s. Solo Modules include a 13mm cable entry hole.

770mm Not available in Emergency Gear Types

To ensure illumination uniformity High, Medium or Low Output Modules should **not** be mixed. Modules should **always** be matched within their output group.

IV Link Suspended (Direct/Indirect)

IK Solo Suspended (Direct/Indirect)

- A** Integral Driver
- E** Emergency
- J** Switch Dim
- K** Switch Dim + Emergency
- S** DALI Dim
- T** DALI Dim + Emergency
- C** DALI Dim + DALI Emergency

3 Warm (3000K) **4** Neutral (4000K)

1 White (RAL 9010) **2** Urban Graphite (RAL 7046) **3** Black (RAL 9005)

344 3x 5m Suspensions (wires only) (2240mm/3360mm Modules)

Tel: (0191) 280 9911 Email: technical@hacel.co.uk Web: www.hacel.co.uk

Infinitas® Micro 90° Corners Direct Indirect - Power Supply

High Output

LED	27W	LED	606mm	IV	1139	LED	27	537
-----	-----	-----	-------	----	------	-----	----	-----

Medium Output

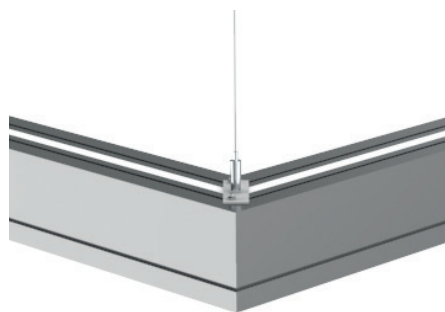
LED	20W	LED	606mm	IV	1139	LED	20	538
-----	-----	-----	-------	----	------	-----	----	-----

Low Output

LED	13W	LED	606mm	IV	1139	LED	13	539
-----	-----	-----	-------	----	------	-----	----	-----

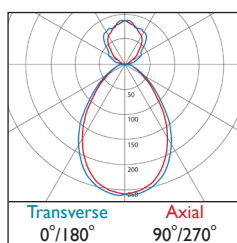
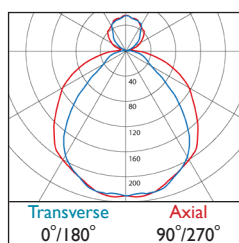
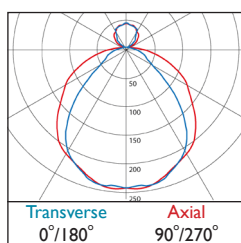
Power Supply Modules include a 13mm cable entry hole and are only required for Link Systems.

Power Supplies are only available as Link Modules



Infinitas® Micro 90° Corners Direct Indirect

Photometrics



537 ULOR: 0.11 DLOR: 0.61 | **538** ULOR: 0.15 DLOR: 0.57 | **539** ULOR: 0.25 DLOR: 0.43

Infinitas® Micro Direct Indirect - End Caps

2x End Caps

Suspended



IN1110

X

CAP000

—



Suspended