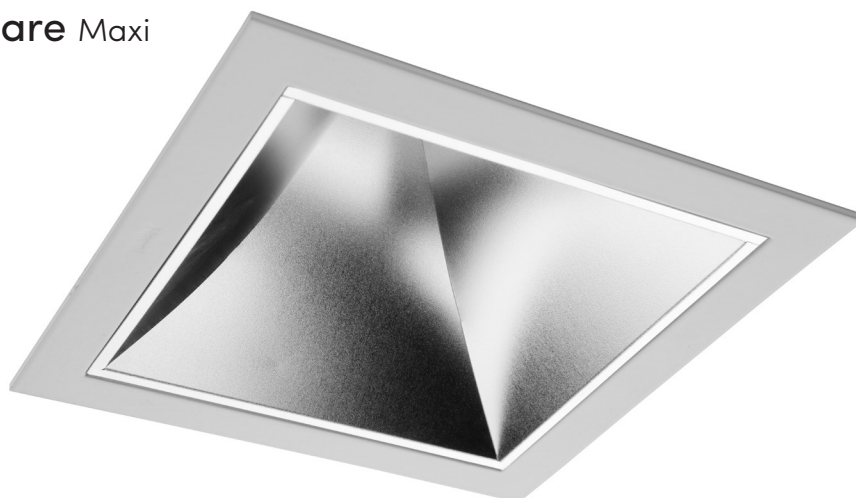


IMPORTANT INFORMATION

Soledo® Square Maxi

ID1101 / ID1102



1. **Ensure electrical supply is isolated before fitting and/or making any electrical connections. Luminaires should be disconnected from the mains supply before any High Voltage Insulation tests are carried out.**
2. Make a cut out in the mounting surface 180 x 180mm.
3. A minimum ceiling void clearance around cut out of 300mm and minimum 60mm above the head of the luminaire is required for ventilation purposes.
4. Bring the Mains/Dimming cabling through the cut out.
5. Lift the hinged cover of the Driver to reveal the Mains/Dimming terminals.
6. Make the Mains/Dimming connections to the Driver according to the information on the Driver cover. The secondary side of Driver is pre-wired and does not require any further wiring.
7. If there is no Earth terminal on Driver, the Mains/Dimming cabling into the Driver must be double insulated.
8. Fit the relevant cable grips located under the hinged lid to secure cabling and close lid securely.
9. For Emergency versions the battery connection should be made only when a permanent mains supply is in place.
10. Feed the Driver through the cut out and locate in the ceiling void.
11. Carefully lift the legs of the fixing springs on one side into the cut out.
12. Finish the installation by lifting the legs of the springs on the other side and ease into the cut out.
13. Centre the luminaire to ensure none of the cut out is visible.
14. Reconnect the electrical supply and test the installation.