



PIR version shown

## Vertigo® Quad



### LED

136W LED  1621  LED  136  +  461

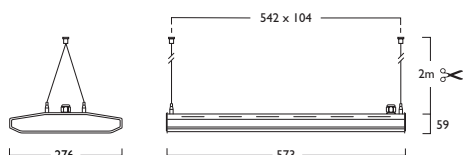
### LED & PIR

136W LED  1624  LED  136  +  461

PIR versions not suitable for use with Gear Types J, K, L and M

### Control Devices

Microwave/PIR Controller



230V 50Hz IP20 542 x 104mm 3.9 kg 40°C



- Available in a choice of lumen outputs delivering up to 23894 lumens
- Efficacies up to 120 lm/W
- Wide beam refractor (82°) as standard, ideally suited to Warehouse and Superstore applications
- Optional Extra Wide beam refractor (112°) for general illumination
- Suitable for ambient temperatures up to 40°C
- Life expectancy in excess of 72,000 hours (L80 B10) at 25°C ambient and 70,000 hours (L80 B10) at 40°C ambient
- Colour stability within 3 MacAdams
- The PIR Detector defaults can be modified with the use of the Hand Held Controller (contact Technical for advice)
- Versatile installation solutions include Suspended, Surface, Trunking and Gripple. (Gripple and Trunking not supplied with fixings)
- Suspension versions supplied with 2 x 2m Suspensions and chrome clutches as standard
- IK08 Compliant
- Wireless Lighting Control available, see Connected video for full overview

PN Pendant GR Gripple SM Surface TM Trunking

NB: Gripple and Trunking versions not supplied with fixings. Gripple versions can be used for chain mounting.

Gear types F & G must be operated through a DSI

- A Integral Driver/Remote
- E Emergency
- F Digital Dim
- G Digital Dim + Emergency
- J Switch Dim
- K Switch Dim + Emergency
- S DALI Dim
- T DALI Dim + Emergency
- C DALI Dim + DALI Emergency
- L DALI Bluetooth
- M DALI Bluetooth + Emergency

3 Warm (3000K) 4 Neutral (4000K)

1 White (RAL 9010) 2 Urban Graphite (RAL 7046) 3 Black (RAL 9005)

### Refractor Option

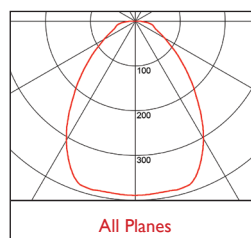
- 544 4x ExtraWide Beam  464
- 144 2x 5m Twin Suspensions (Wires only)



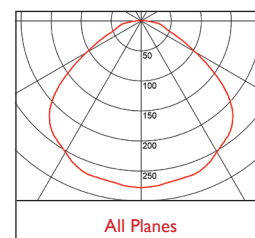
## Vertigo® Quad

<b>3</b>	<b>Warm White LED (3000K)</b>	<b>CRI 80 136W</b>
	Lumen Output	22723 lm
	LOR	0.80
	CRI	80
	Total Power	151W
	Power Factor	0.95
	Running Current	0.62A
	Inrush Current (Std)	50.5A (176us)
	Inrush Current (Dim)	17.7A (162us)
	Efficacy	120 lm/W
	Emergency Output (BLF)	380 lm (2%)
<b>4</b>	<b>Neutral White LED (4000K)</b>	<b>CRI 80 136W</b>
	Lumen Output	23894 lm
	LOR	0.80
	CRI	80
	Total Power	151W
	Power Factor	0.95
	Running Current	0.62A
	Inrush Current (Std)	50.5A (176us)
	Inrush Current (Dim)	17.7A (162us)
	Efficacy	126 lm/W
	Emergency Output (BLF)	400 lm (2%)

### Photometrics



**46 l DLOR: 0.80**



**464 DLOR: 0.80**

*Suspensions and Mounting details shown over*

# Vertigo® Quad Suspensions & Mounting

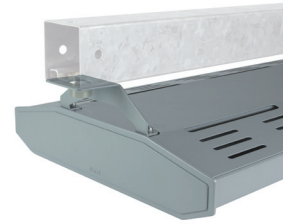
## Fixing Types

**PN** Pendant

**GR** Gripple

**SM** Surface

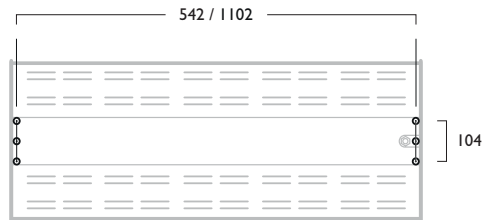
**TM** Trunking



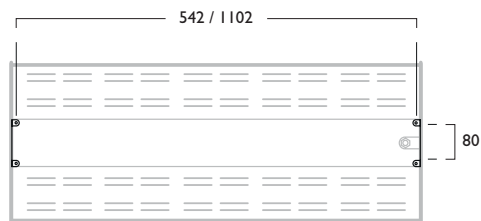
## Fixing Centres

### Quad / Quad Linear

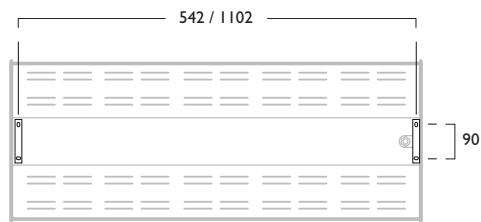
**PN** Suspended



**GR** Gripple



**SM** Surface



**TM** Trunking

