

# LightLine® IP66



## LED

28W	LED	5000mm	LT1004	P	LED	28	445
66W	LED	5000mm	LT1005	P	LED	66	446



LightLine® IP66

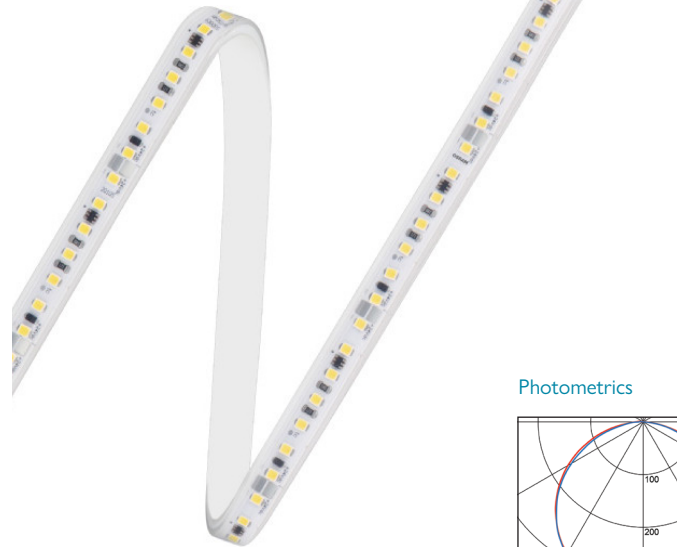
PRODUCT INFORMATION

3	Warm White LED (3000K)	CRI 80	28W	66W
	Lumen Output		3200 lm	8100 lm
	LOR		1.00	1.00
	CRI		80	80
	Total Power		31.6W*	72.6W*
	Power Factor		0.95*	0.95*
	Running Current		0.14A*	0.33A*
	Inrush Current (Std)		20.0A*	60.0A*
	Inrush Current (Dim)		52.0A*	52.0A*
	Efficacy		101 lm/W*	111 lm/W*
	Emergency Output (BLF)		N/A	N/A

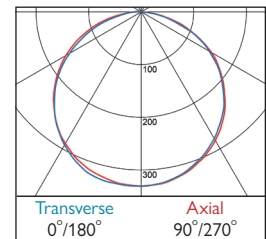
  

4	Neutral White LED (4000K)	CRI 80	28W	66W
	Lumen Output		3200 lm	8150 lm
	LOR		1.00	1.00
	CRI		80	80
	Total Power		31.6W*	72.6W*
	Power Factor		0.95*	0.95*
	Running Current		0.14A*	0.33A*
	Inrush Current (Std)		20.0A*	60.0A*
	Inrush Current (Dim)		52.0A*	52.0A*
	Efficacy		101 lm/W*	112 lm/W*
	Emergency Output (BLF)		N/A	N/A

\* Typical values may vary depending on Driver used



## Photometrics



445/446 DLOR: 1.00

## LightLine® IP66 Connectors



Starter Connector	500mm	LT1006	P	CON 005
Connector	180mm	LT1007	P	CON 005
End Cap	N/a	LT1008	X	CAP 000
Fixing Bracket	N/a	LT1009	X	BKT 000

- Flexible IP66 rated LED Modules
  - Available in a choice of lumen outputs, delivering up to 1630 lumens per metre
  - Efficacies up to 112 lm/W, colour stability within 3 MacAdams
  - Life expectancy in excess of 50,000 hours (L70 B50)
  - Single colour and RGB available on request
  - In ambient temperatures above 40C, Hacer recommend using Mounting Track
  - LED Modules should be matched to Driver capabilities/limitations when specifying
  - Mounting Track can be used as a heatsink
  - Mounting Track is pre-drilled or can be fitted with Fixing Brackets
  - Flat Diffuser has a transmission of 50%, Curved Diffuser has a transmission of 59%
  - LightLine IP66 Tape is supplied with 10 End Caps and 20 Fixing Brackets.
- (These are also available to purchase separately as shown opposite)

## LightLine® Drivers

### 24V DC Constant Voltage

Non Dimming	L x W x H			
30W	IP20	270 x 30 x 18mm	CP1266	A EPP 030
40W	IP66	208 x 43 x 26mm	CP1192	A EPP 040
75W	IP20	220 x 47 x 44mm	CP1267	A EPP 075
100W	IP66	240 x 50 x 34mm	CP1198	A EPP 100
160W	IP20	404 x 30 x 22mm	CP1268	A EPP 160
250W	IP20	343 x 60 x 31mm	CP1269	A EPP 250

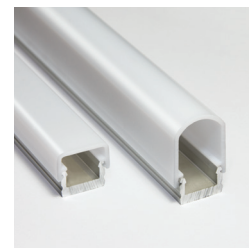
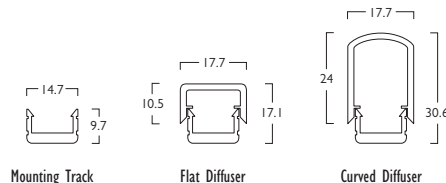
DALI/Switch Dimming	L x W x H			
50W	IP20	346 x 32 x 22mm	CP1270	A EPP 050
80W	IP20	346 x 32 x 22mm	CP1063	A EPP 080
100W	IP66	227 x 69 x 37mm	CP1271	A EPP 100

Bluetooth	L x W x H			
80W	IP20	346 x 32 x 22mm	CP1285	A EPP 080

## LightLine® Accessories

Mounting Track	2000mm	LT1010	X	TRK 000
Flat Diffuser	2000mm	LT1020	X	DFR 000
Curved Diffuser	2000mm	LT1011	X	DFR 000
Curved Diffuser End Cap	N/A	LT1012	X	CAP 000
Mounting Track Fixing Bracket	N/A	LT1013	X	BKT 000



- P 230/24V Constant Voltage Driver Required
- X Non electrical component