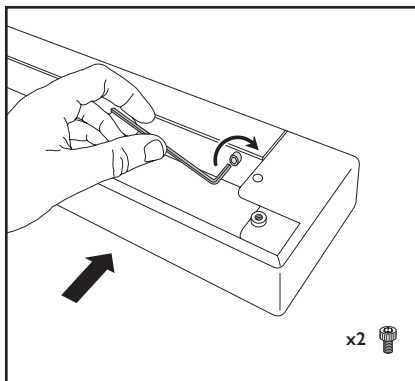
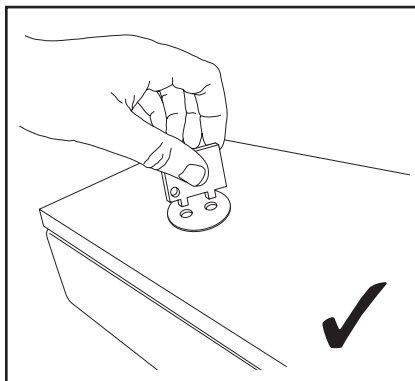


## Installation Cont.

4



5



## Wiring information

	<b>WHITE</b>	- Used for dimming systems, see notes below
	<b>RED</b>	- Used for dimming systems, see notes below
<b>N</b>	<b>BLUE</b>	- Neutral
<b>E</b>	<b>GREEN/YELLOW</b>	- Earth
<b>L1</b>	<b>BROWN</b>	- Live
<b>L2</b>	<b>BLACK</b>	- Live (Emergency Unswitched)

The **White** and **RED** terminals should be used as follows:

### Digital Dimming (Gear types; F, G)

**WHITE** - DSI Signal    **RED** - DSI Signal

### DALI Dimming (Gear types; C, S, T)

**WHITE** - DALI Signal    **RED** - DALI Signal

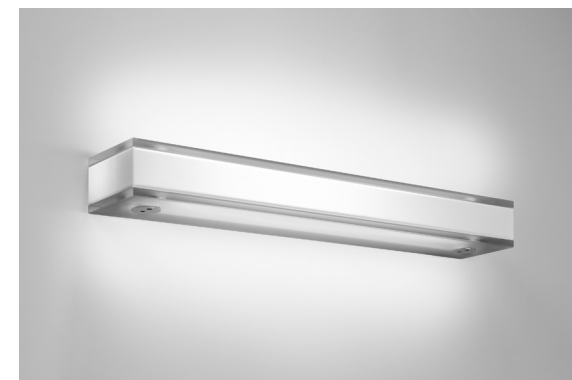
### Switch Dimming (Gear types; J, K)

**WHITE** - Not used    **RED** - Live (Dimming Switched)  
**BROWN** - Live (Unswitched)

*For Link systems the integral wiring harness should be used for continuous wiring. Adjoining luminaires should be bolted together using fixings supplied.*

## IMPORTANT INFORMATION

# Linaj<sup>®</sup> 981/977/Link



Disconnect electricity supply before installation.

To be installed by qualified personnel only.

When installing, Hacer recommends wearing disposable gloves to avoid fingerprinting to the paint work of the luminaire.

Read leaflet fully before installation.

# Hacer<sup>®</sup>

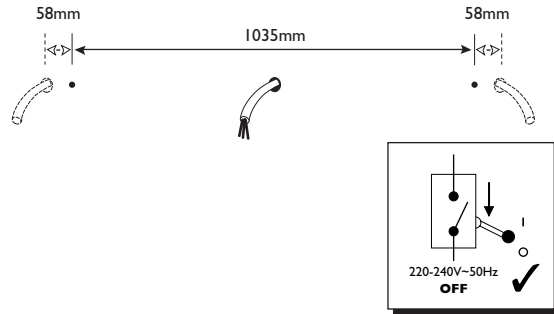
Fluent in Lighting

THE SILVERLINK, WALLSEND, NEWCASTLE UPON TYNE,  
TYNE & WEAR, NE28 9ND

Technical: (0191) 280 9914  
Email: [technical@hacer.co.uk](mailto:technical@hacer.co.uk)  
Web: [www.hacer.co.uk](http://www.hacer.co.uk)

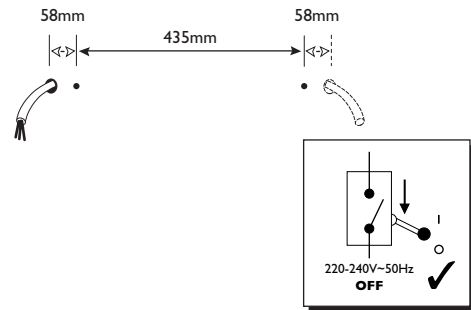
### Preparation (WL981)

- 1 Screws and fixing methods need to be suitable for weight of the luminaire - 51kg's



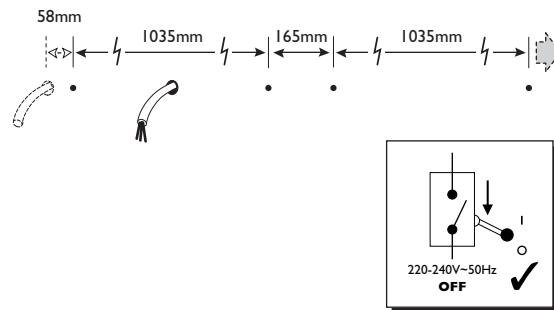
### Preparation (WL977)

- 1 Screws and fixing methods need to be suitable for weight of the luminaire - 35kg's

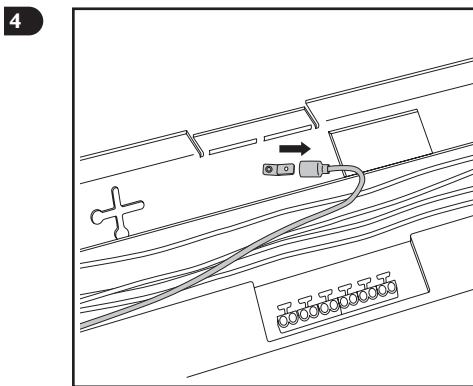
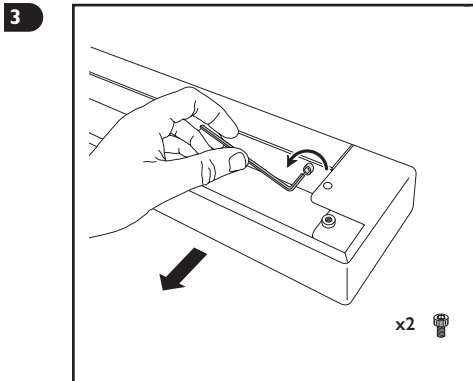
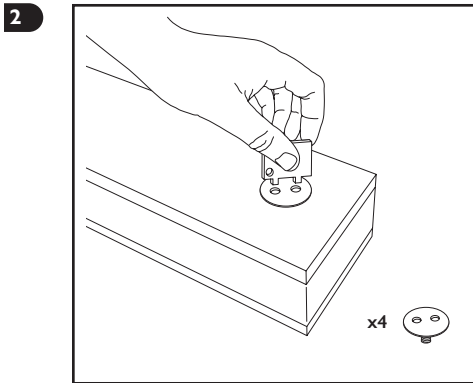


### Preparation (WL945/946/947)

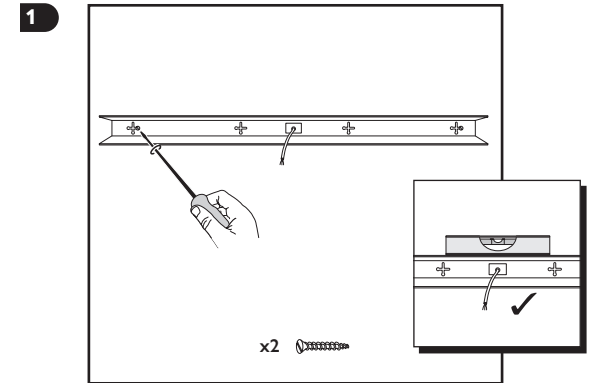
- 1 Screws and fixing methods need to be suitable for weight of the product - 51kg's (per luminaire)



### Preparation Cont.



### Installation



Check - Screws and fixing methods are suitable for the weight of the product

