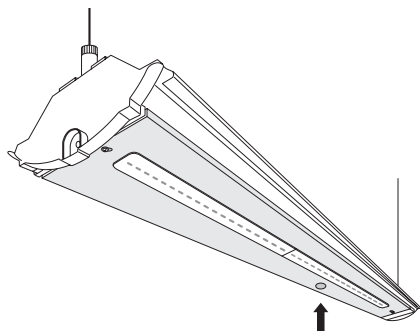


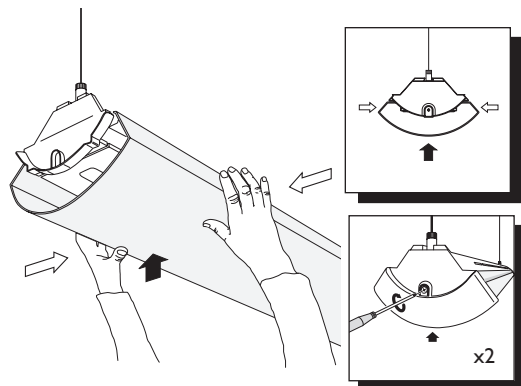
## Installation Cont.

8

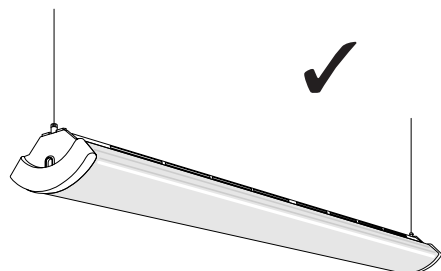


NB - For Emergency versions ensure battery bullet connection is made when a permanent mains supply is present.

9



10



## IMPORTANT INFORMATION

### Ariga® Pendant PN395



#### Disconnect electricity supply before installation

To be installed by qualified personnel only.

When installing, we recommend wearing disposable gloves to avoid fingerprinting to the paint work of the luminaire.

Read leaflet fully before installation.

**Due to the weight of luminaires, ensure suitable fixings are used when installing!**

# Hacel®

Fluent in Lighting

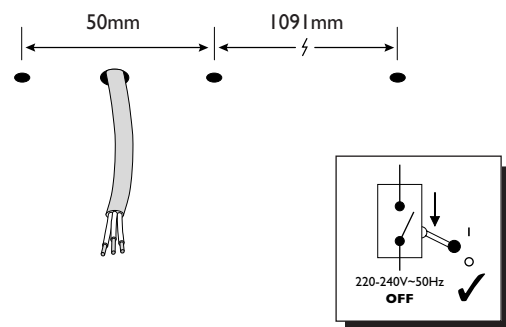
THE SILVERLINK, WALLSEND, NEWCASTLE UPON TYNE,  
TYNE & WEAR, NE28 9ND

Technical: (0191) 280 9914  
Email: [technical@hacel.co.uk](mailto:technical@hacel.co.uk)  
Web: [www.hacel.co.uk](http://www.hacel.co.uk)

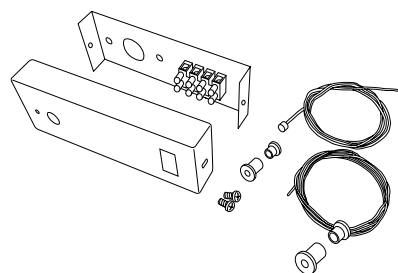
03/2020

## Preparation

1

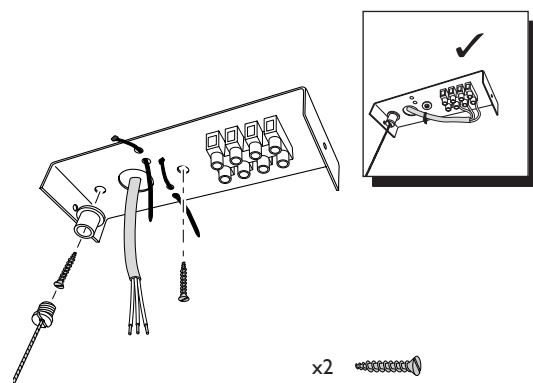


2



## Installation

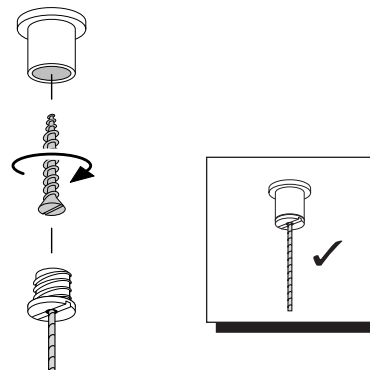
1



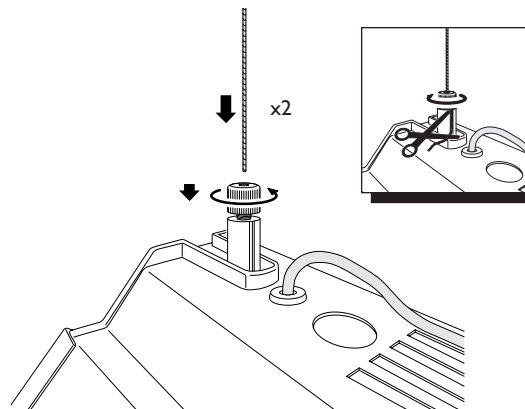
## Installation Cont.

2

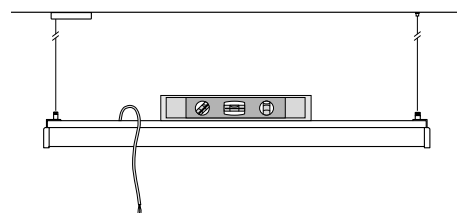
Due to the weight of luminaires, ensure suitable fixings are used when installing!



3

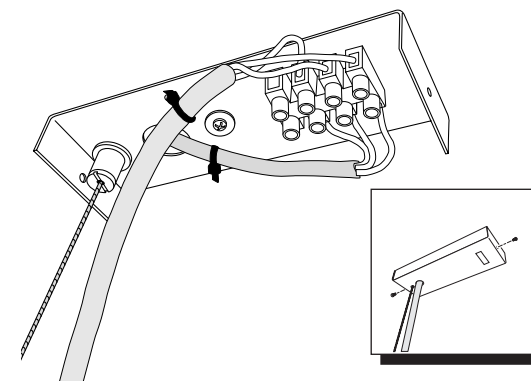


4



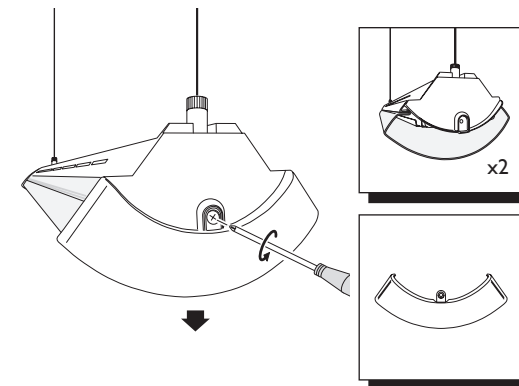
## Installation Cont.

5



Points 6-10 only apply to Emergency versions

6



7

